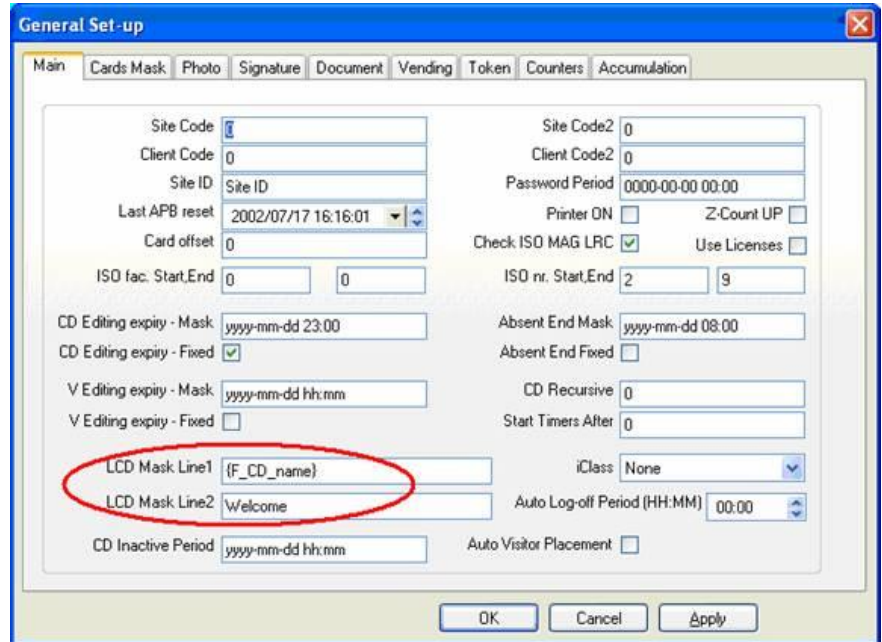


## LCD DISPLAY

### SoftWin3

#### LCD settings

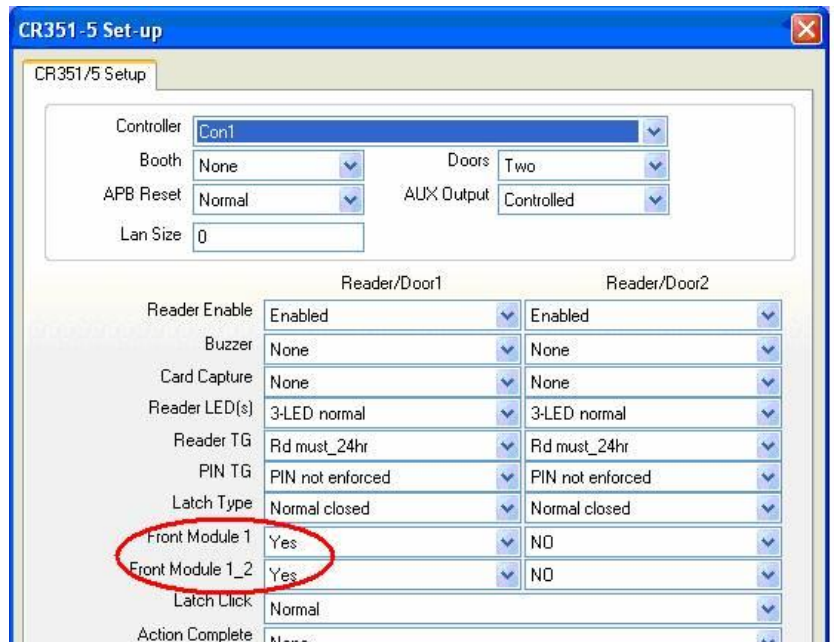
- click on Setup - General setup
- at Main tab - Change Lcd Mask Line 1 & 2 (default is users name and "Welcome").



#### FLAN settings

Sets Connection to CR375 via FLAN RS485.  
Note HH link out for display to function.

- Click on Setup – Setup Editor - CR351/5 Setup
- Right click on the Controller – Properties
- Change front module 1 & front module 1\_2 to "Yes".  
This enables node 1 and 2 on the FLAN.  
If only 1 LCD, only Yes for 1.



## READER settings

Sets what to display (for each reader)

- Click on Setup – Setup Editor - Rader Setup
- Right click on the Reader – Properties
- Select what to display.

Reader Set-up

General Area/Type

Door (Input) Input 0

Latch (Out) Output 0

Area In Area zone 0

Area To Area zone 0

APB None

Strictly from Disabled

ATB 0

Reader Type Name

Db Location Cntrl-all

Use Card

Reader set-up - what is displayed on the reader LCD. Set none if no display. <Access>

## ACCUMULATION settings

If the Softcon accumulation values must be displayed on the LCD, set accumulation

- click on the “Accumulation” tab and change the hour, day of week & day of month

The 'General Set-up' dialog box has several tabs: Main, Cards Mask, Photo, Signature, Document, and Accumulation. The 'Accumulation' tab is active. It contains the following fields:

- Last date/time: 2004/09/02 10:00:00
- Hour: 23 (range 0-24)
- Day of Week: -1 (range 1-7)
- Day of Month: -1 (range 1-31)
- Accumulation Display section with two checked checkboxes:  Week and  Month.

- Click on Setup – Setup Editor – Reader Setup
- Right click on the Reader – Properties
- Click on “area/type” tab
- Change the Accumulate to “Clock in” or “Clock out”
- Change the Reader type to “Name”
- Do this for Both the readers

The 'Reader Set-up' dialog box has two tabs: General and Area/Type. The 'Area/Type' tab is active. It contains the following fields:

- Door (Input): Input 0
- Latch (Out): Output 0
- Area In: A1
- Area To: A2
- APB: None
- Strictly from: Disabled
- ATB: 0
- Accumulate: Clock in (circled in red)
- DB mode: 02 Facility, xref
- Card Type: 02 Wiegand 30
- Header Type: Name (circled in red)
- Db Location: Cntrl-all
- Use Card: CardNum 1
- Random Output: [empty]
- Random %: [empty]
- Random Input: [empty]
- ATB Linked:
- Report Frame:
- ALT ISO Start: [empty]
- ALT ISO End: [empty]

At the bottom, there are navigation controls: Record (2 of 141) and XRef (1). Buttons for OK, Cancel, and Apply are also present.

# Hardware

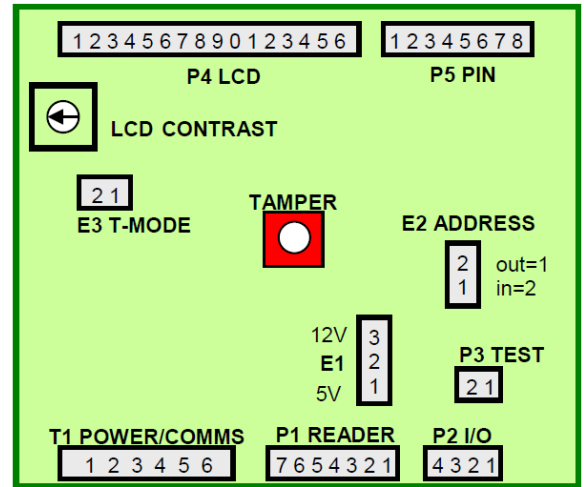
## Front End Connection

Both the Front ends must be connected to the controller's FLAN connection.  
The Cable must be looped from Front End 1 to Front End 2.

Address link E2.

- No link      Node 1 = Reader 1
- Link        Node 2 = Reader 2

Change link with power off



See SCS\_CR375.booklet.pdf and SCS\_CR3???.lid.pdf for connections.