



# SW3 dB AccessHow2

**Revision 005**

**03 March 2022**

# Revision History

| Version | Date       | Person | Reason For Changes  |
|---------|------------|--------|---|
| 001     | 2016-02-26 | TdP    | Initial   |
| 002     | 2021-06-11 | MTL    | Rename document to SCS_sw3_dB_SQL.how2<br>Reformat and update |
| 003     | 2021-06-29 | MTL    | Add corruption  |
| 004     | 2022-03-02 | MTL    | Add SQL Server Service  |
| 005     | 2022-03-03 | MTL    | Remove SQL  |
|         |            |        |   |

## CONTENTS

|   |                              |   |
|---|------------------------------|---|
| 1 | AIM                          | 3 |
| 2 | GENERAL                      | 3 |
| 3 | MS ACCESS                    | 3 |
|   | 3.1 SW3 INSTALLATION         | 3 |
|   | 3.2 SW3 SCS_SERVER           | 3 |
|   | 3.3 MS ACCES DATA CORRUPTION | 3 |
|   | 3.4 BACKUP                   | 3 |
| 4 | CORRUPT RECORD               | 4 |

# 1 AIM

The aim and goal of this .PDF document is to serve as addition help manual for the use of the Softcon program SoftWin3 (SW3). MS Access Installation, back-up and recovery is described in this document.

# 2 GENERAL

When installing SW3, the database used for setup, user profiles and event logging can be selected as Microsoft Access (MS Access) or SQL. See the document SCS\_sw3\_Install.how2

**MS Access** requires no additional editing tools or licensing. It is simpler to install, use and backup and is preferred for smaller installations. C:\softwin3\dbedit\SCS\_DBEdit.exe is provided with the installation and can be used to edit Access databases, alternatively use MS Access (part of Microsoft Office suite of Applications).

A MS Access database can be corrupted if the PC is switched off while SW3 is writing into a database, hence daily backups is essential. See Backup.

## SQL

Requires the additional installation of a SQL drive and manager such as Microsoft SQL Server, SQL Express (this is not provided). See SCS\_sw3\_dB\_SQL.how2.

## dB Configuration

Database.mdb (defines databases used by SW3) and Editor.mdb (defines SW3 lists, property sheets and passwords) are in C:\Softwin3\config are MS Access databases. Note the default directory contains these files as shipped.

Executing c:\softwin3\exe\SCS\_ConfigSync.exe – adds new fields in the default files into the files in config (this is automatically run when installing (or updating) over an existing installation.

C:\softwin3\dbedit\SCS\_DBEdit.exe is provided with the installation and can be used to edit Access databases, alternatively use MS Access (part of Microsoft Office suite of Applications).

See SCS\_sw3\_dB.spec for information on functioning of Database.mdb and Edit.mdb.

See SCS\_sw3\_dB\_Size.how2 on increasing the number or records in a database (also in SCS\_sw3\_dB\_Config.how2).

# 3 MS ACCESS

## 3.1 SW3 INSTALLATION

The default SW3 install is for MS Access, no additional settings are required – simply install SW3.

## 3.2 SW3 SCS\_SERVER

When SCS\_Server.exe is started, and the databases cannot be found, the Unable to connect dialog is shown. This will only occur if databases are moved or swapped from SQL to MS Access.

To be added

Data Link Properties will be displayed.

## 3.3 MS ACCESS DATA CORRUPTION

Replace the corrupt .mdb from backup (copy to c:\Softwin3.database).

If a record is corrupt:

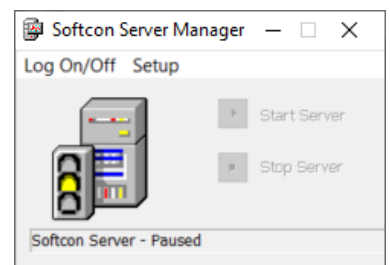
- Use MS Access or dBEedit to correct.
- In the appropriate list editor, delete record and use last record (see corrupt record below).

## 3.4 BACKUP

Backup.bat files are provided with SW3 installation. Updated versions are available on [www.softconserv.com/downloads](http://www.softconserv.com/downloads).

See the document SCS\_sw3\_Backup.how2 for details.

This document also shows setup auto backup the databases via event (on time of day).



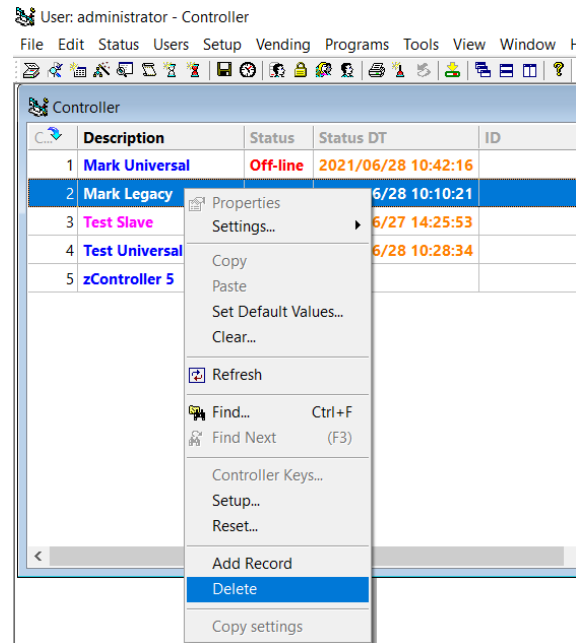
# 4 CORRUPT RECORD

Delete the record in the appropriate SW3 list editor, rename the last available record reference to the deleted record reference (make the field editable by right click on the list properties and change the eye-lcon to editable).

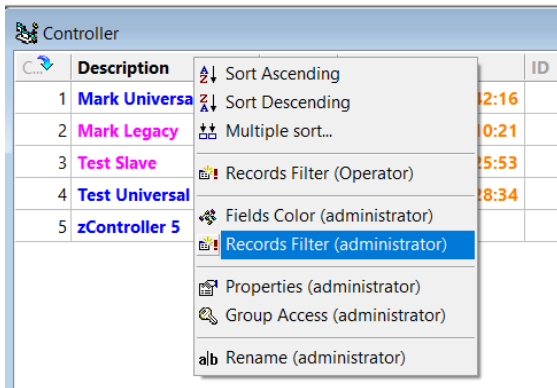
Re-setup the data.

As e.g.: data not downloading to an on-line controller – a controllers setting suspected to be corrupt:

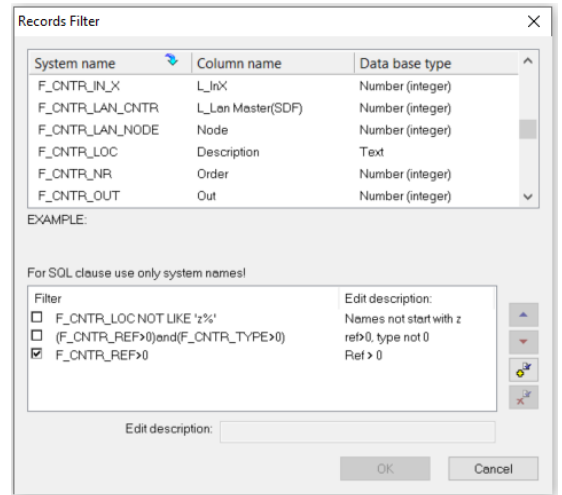
Right click on corrupt record and select Delete



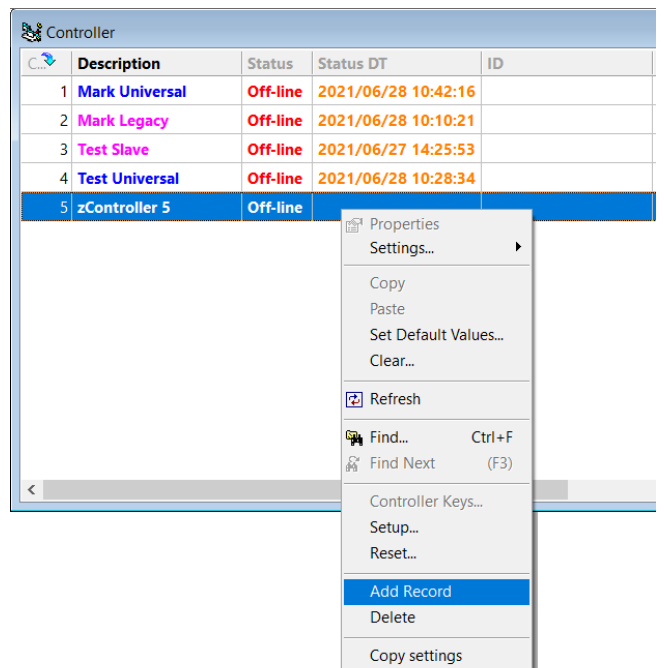
Right click on the list heading (e.g. on Description), Select Records Filter



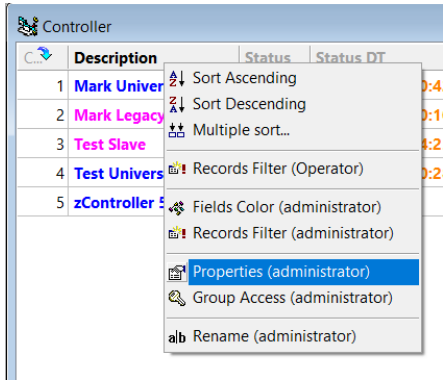
Remove tick on filter that filters out last record (e.g. F\_CNTR\_LOC NOT LIKE 'z%') or simply remove all ticks



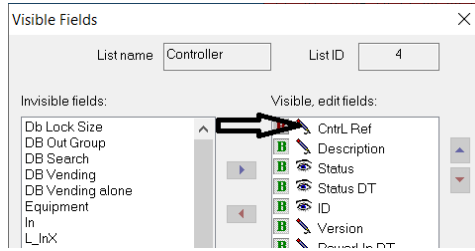
If the last record is used, right click on any record and Add Record



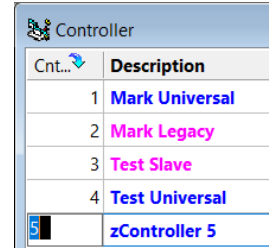
To make the Reference number editable, right click on any record, select properties



change the eye-icon to editable



Click on the last record reference, change to reference of the record deleted



Re-setup the Controller