



SW3 Bootloader Help

Revision 457

21 February 2021



Revision History

Version	Date	Person	Reason For Changes
001	2021-02-01	MTL	New document

CONTENTS

1	GENERAL	3
2	SETUP	3
	2.1 QUICK SETUP	3
	2.2 BOOTLOADER SETUP	3
	2.3 CONTROLLER SETUP	4
	2.4 COMMS INTERFACE SETUP	4
3	TOOLS	4
	3.1 BOOTLOADER MESSAGES	4
	3.2 SECURITY	4

1 GENERAL

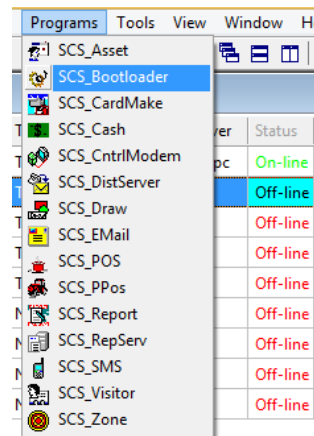
This application updates controllers (CntrP) connected to the Ethernet (TCP/IP) or LAN (RS-485) – connected to SW3.

Requirements:

- CR391 that has a firmware version SCS_CR391P_00K.01V or higher.
- TCP/IP or RS-485 connection to the CR-391.
- SW version Softwin3_1_04_15 or Higher.

SCS_Bootloader.exe is started directly or via SCS_Client-Programs.

The controller must be on-line with SCS_Client (will send a message to the controller to enter BootLoader mode).

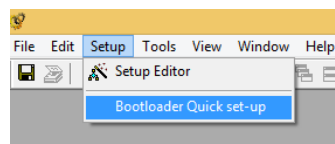


[CR391_FWupdate](#) gives all update options (includes ICD programmers).

2 SETUP

Two options are available for upgrade

- Quick setup** CntrPs once, same time.
- BootLoader** Multiple with schedule and retry.



2.1 QUICK SETUP

Firmware file to update the CntrP with is selected
 HEX-File: Browse to firmware by clicking on the browse button.

Time and date scheduled

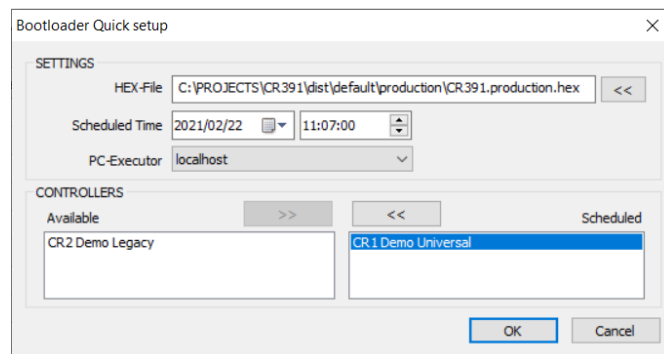
Date and time when the schedule needs to run.

CntrPs to be updated

Select available and move to the scheduled box.

PC- Executor

Select the computer that will execute the update.



OK will set the schedule.

2.2 BOOTLOADER SETUP

Controller	PC Executor	UDP ...	Tries	File	Operation Date	Status	Last Done	BL Version
CR1 Demo Universal	localhost	6234	3	C:\PROJECTS\CR391\dist\default\production\...	2021/02/22 12:30:00	No Response fr...	2021/02/22 12:30:22	
CR2 Demo Legacy		6234	3					

This list shows all CntrP in the system.

As set PC that must do the update (**Executer**), the number of **Retries** (if unsuccessful) and the **Operation Date** (when to do).

Status automatically changes (**errors in red**)

- Scheduled
- Success
- Version request
- Flash erased
- Programming
- Programming completed
- Verifying
- Verification successful
- Run application
- In queue
- Node will enter Bootload mode in 5 sec
- Device connected
- Command issued to run node application
- Node marked for upgrade
- Started

- Stopped by user
- Incorrect Bootloader set-up
- Boot Mode message failed
- Incorrect Bootloader file
- Bootloader file does not exist
- Failed to set the receive timeout
- Receive Socket Error
- No Response from device
- Verification failed
- Connection error

2.3 CONTROLLER SETUP

Shows the Controller available (set via SCS_Client)

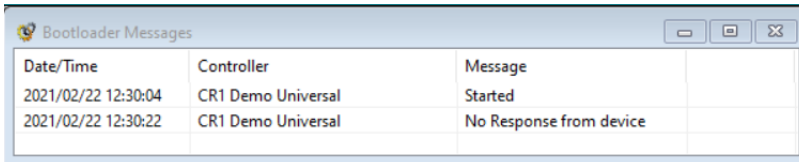
2.4 COMMS INTERFACE SETUP

Shows the Comms Interface (set via SCS_Client)

3 TOOLS

3.1 BOOTLOADER MESSAGES

This the BootLoader activity menu – listing events as they occur.



The screenshot shows a window titled "Bootloader Messages" with a table containing the following data:

Date/Time	Controller	Message
2021/02/22 12:30:04	CR1 Demo Universal	Started
2021/02/22 12:30:22	CR1 Demo Universal	No Response from device

3.2 SECURITY

Log On/Off, Changing **Password** and **Menu Access** is the same as for SCS_Client