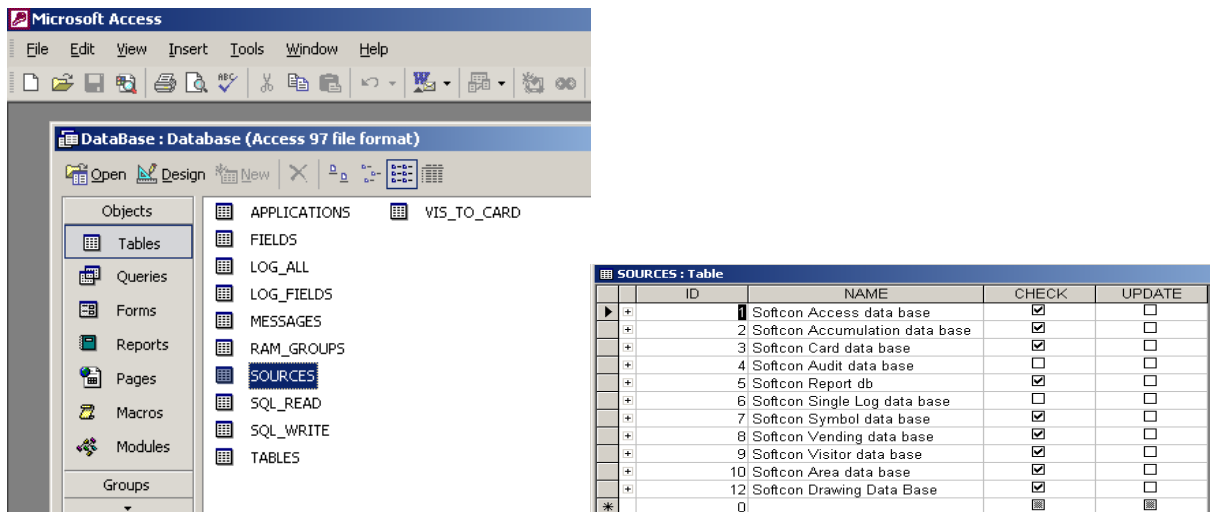
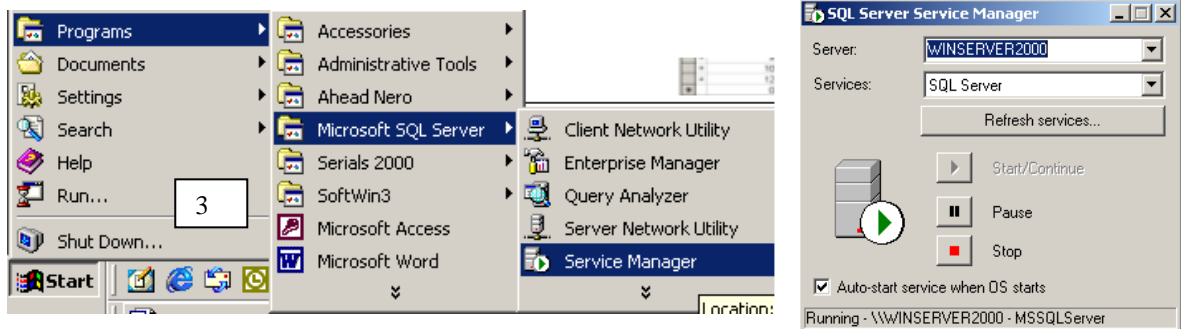


# SQL CONVERT PROCEDURE

1. Install Softwin3
2. Run Softwin3
3. Stop Softwin3
4. Open c:\softwin3\config\databases\sources table (see pic 1 + 2) and make sure that there is a tick in each "check". i.e. select all. Please also note that logging is limited to 30 000 entries.

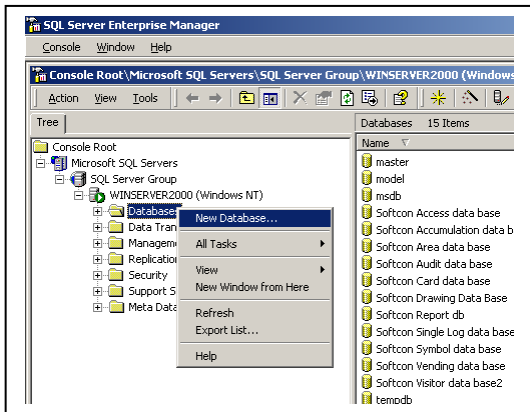


5. Start SQL (see minimum requirements at end of Document).

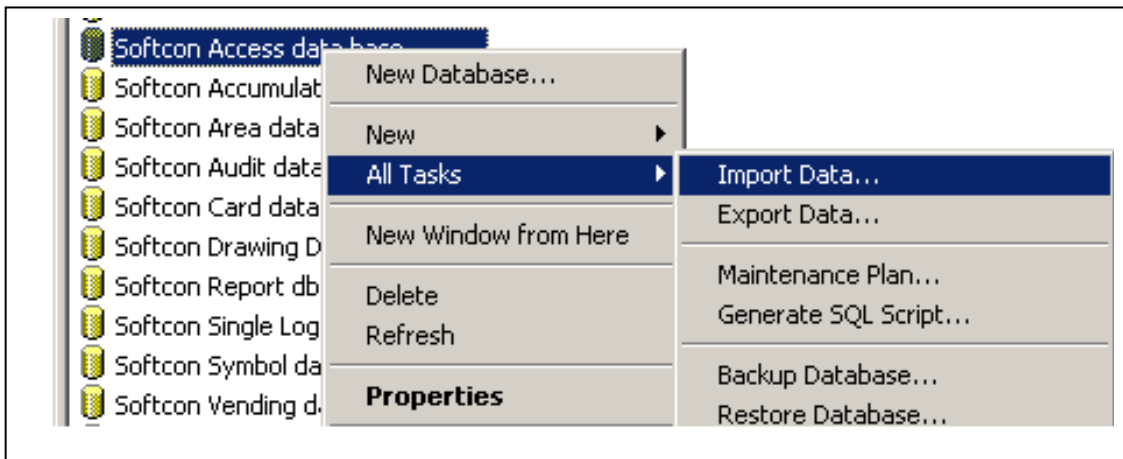


6. Go to SQL Enterprise manager

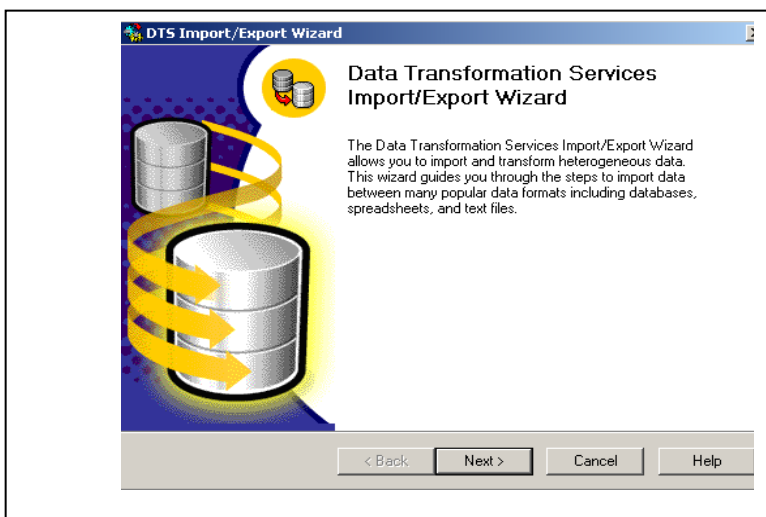
7. Make new databases as seen in sources table by right clicking the database folder and selecting “NEW DATABASES”. Do the same for all databases seen in the sources table. (Pic 5)



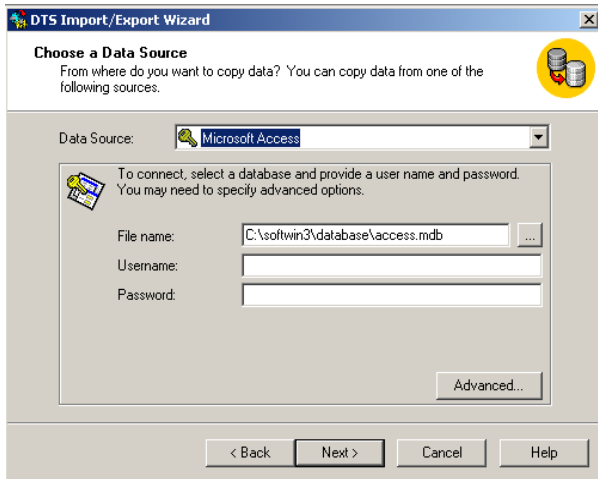
8. Right Click on any of the new databases that you have just created and select “ALL TASKS ---IMPORT DATA. (Pic 6)



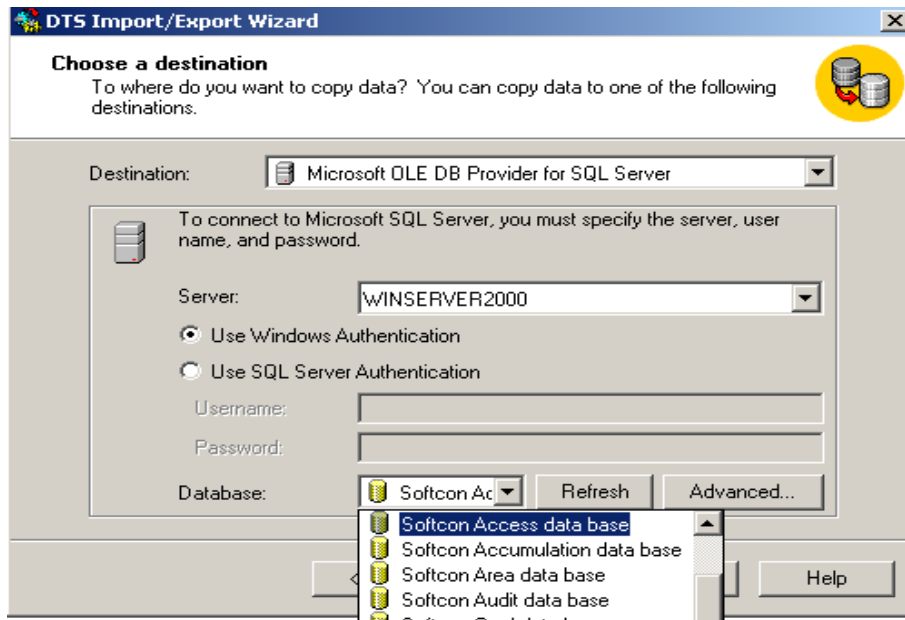
9. The DTS IMPORT/EXPORT WIZARD will pop up. Click “NEXT” to continue (pic 7)



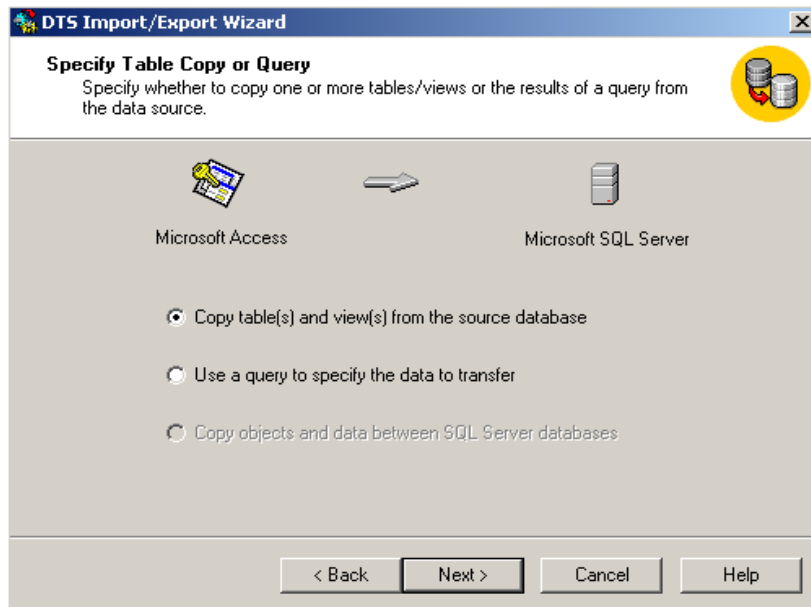
10. The choose data source window appears. Here you have to enter the data source “Microsoft Access”. You must also enter the file name or browse for the file by using the square with 3 dots in it. When done click Next to continue. (pic 8)



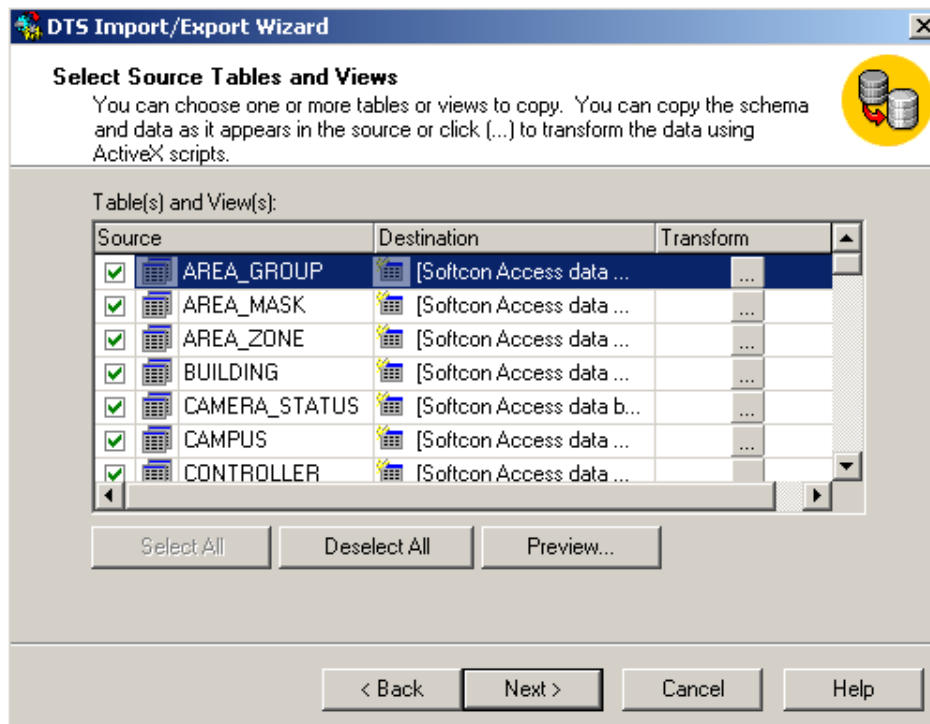
11. The “Choose Destination” window now appears. Here you have to select where to send the data (This will be the OLE Driver for SQL). Choose your server and authentication type. Choose also your database to send to (pic 9). Press “Next” when done.



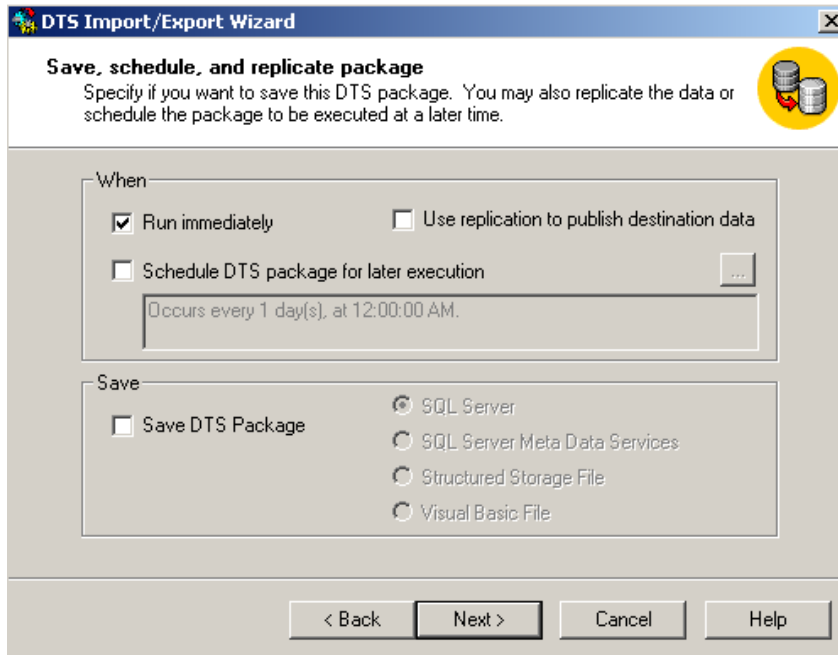
12. The “Specify Table Copy or Query “ window pops up and you now have to select the “copy table.....” button. Click “Next” when done. (pic 10)



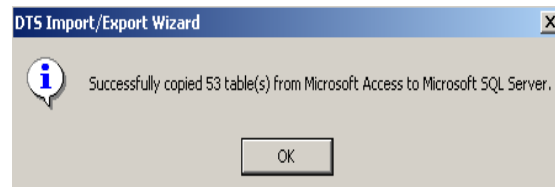
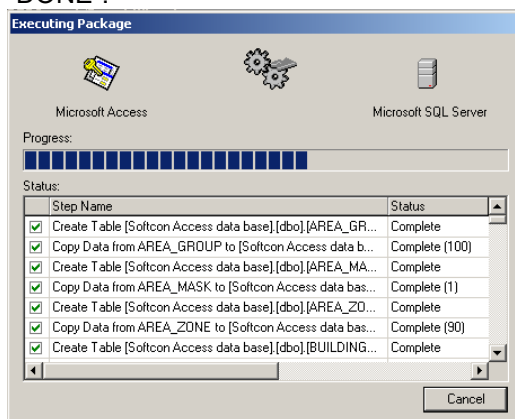
13. The “Select Sources Table And Views window pops up. At the bottom left side of the window you will see a button “SELECT ALL”, press it to select all. Click next. (pic 11)



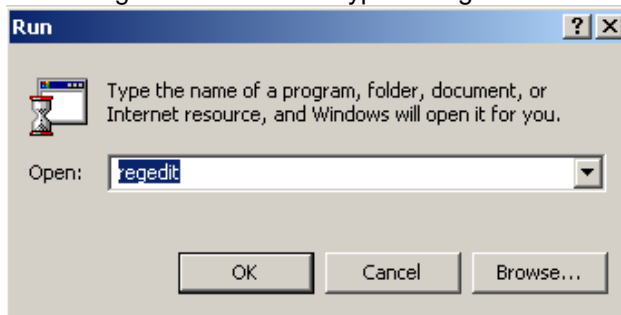
14. The “Save, Schedule And Replicate “ window appears. Select “run immediately”, clear the other check boxes and click next. (pic 12) and lastly click FINISH.



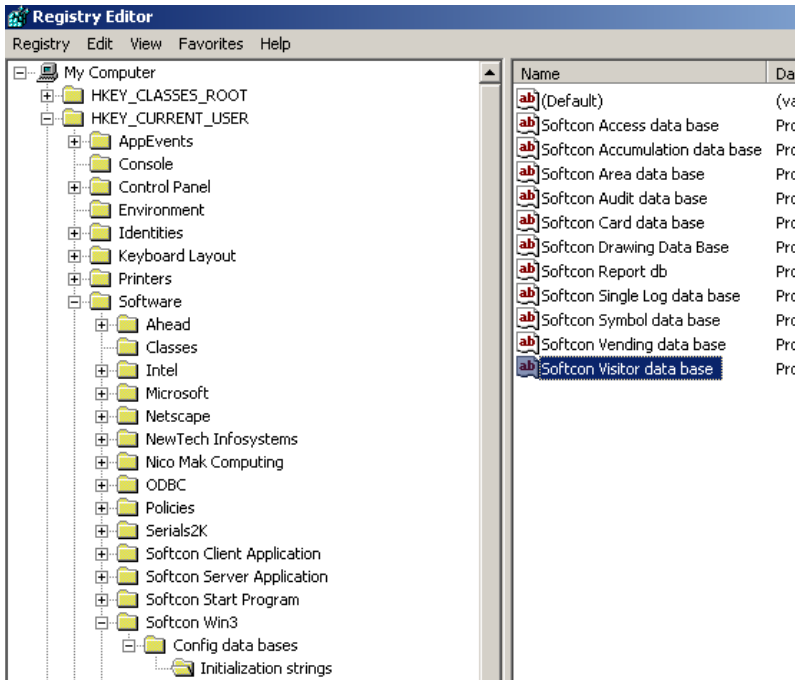
15. You will see a window showing the progress appear (pic 13). Do not press "cancel". Once completed a confirmation window will appear informing you whether or not it was successful. (pic 14) Click OK and then "DONE".



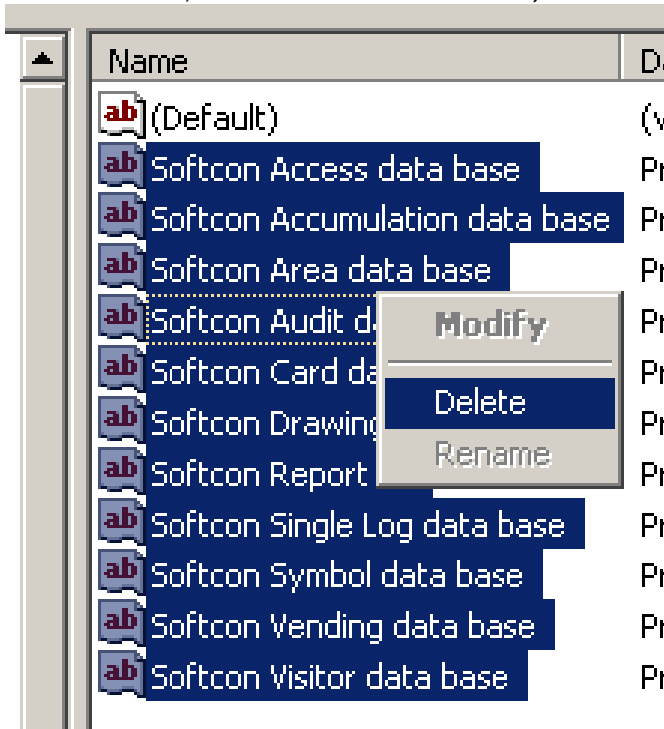
16. Do the same for all new databases that were created in step 7  
 17. Once completed stop SQL Server  
 18. Now go to start-run and type in "regedit". Press OK (See picture below) BE VERY CAREFULL.



19. You are now in the registry. Here you are going to delete the initialization strings of the original softwin3 program. This is done in order to point the softwin3 server to use the SQL databases. Go to HKEY\_CURRENT\_USER\Software\Softcon Win3\Config data bases\Initialization strings. You should see 12 database strings. See picture below.

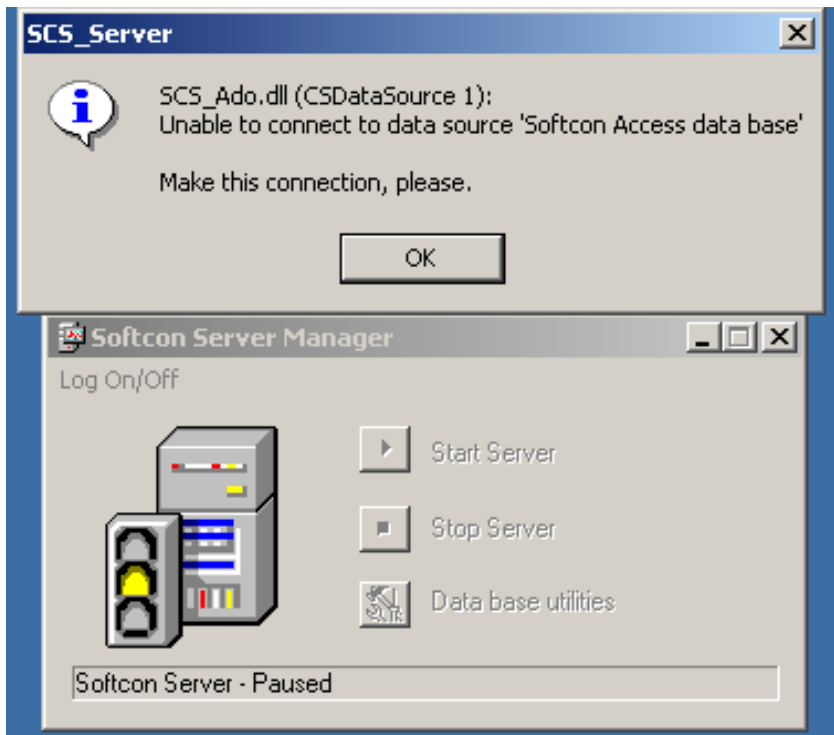


20. You must now select all the “strings” except the **default** , **Softcon Single Log data base** , **Softcon Audit data base** , **Softcon Accume data base** , and delete them.

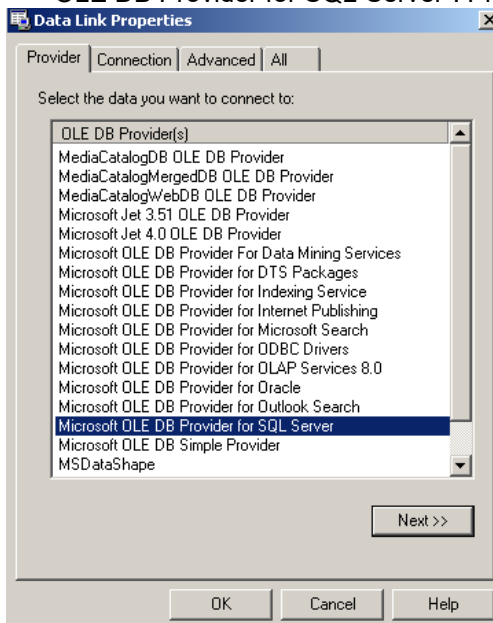


21. When asked whether you are sure? Just press OK and close the registry editor.

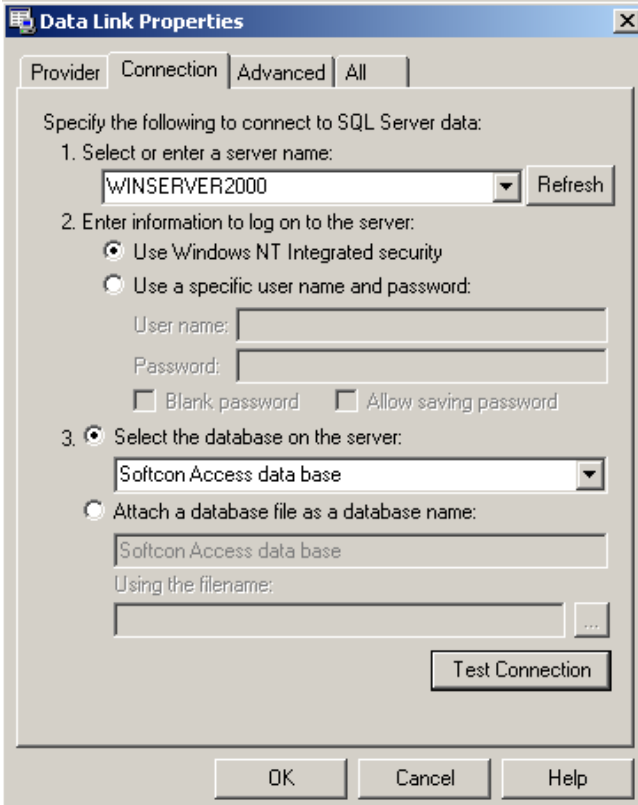
22. Now start Softwin3 Server again. At this stage you will get error messages stating that it is unable to connect to the data source and asking you to make this connection. See pic below.



23. Click on the OK button. **(MAKE SURE THAT YOUR SQL SERVER IS RUNNING AT THIS STAGE)** A screen will appear (see below) asking you to select the data you want to connect to. Here you must select “Microsoft OLE DB Provider for SQL Server”. Press “Next”.

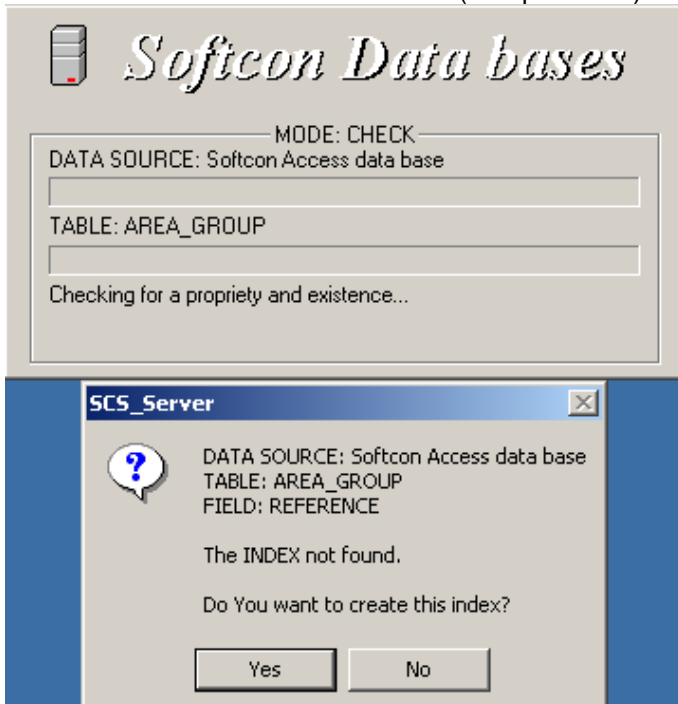


24. On this window you must 1) select your SQL Server name 2) enter log on info and 3) select the database on the SQL Server.



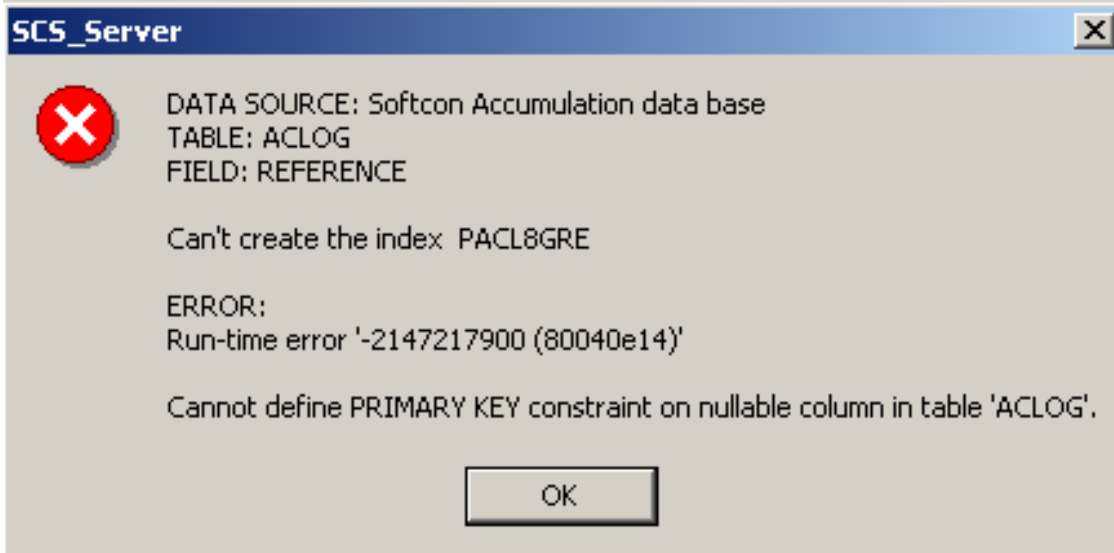
You can test the connection if you want to. When finished click OK

25. These messages will pop up a few times. Just repeat the steps above until YOU GET A NEW TYPE OF ERROR MESSAGE. These messages are expected. Basically they will refer you to set PRIMARY KEYS and/or uncheck NULL values. (See pic below)



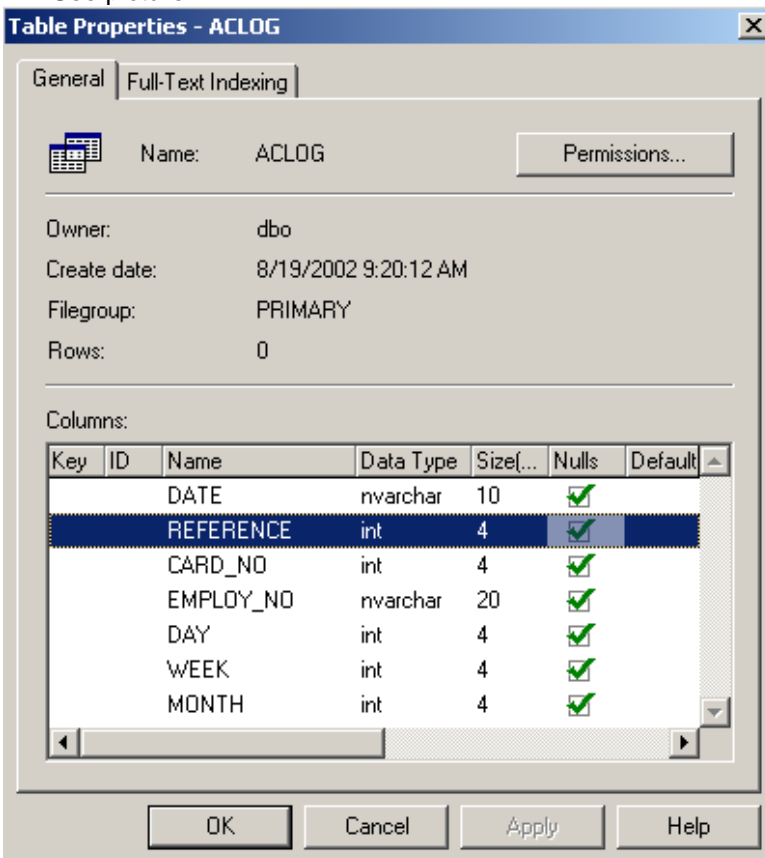
26. When asked to create this index, click YES. This you will have to do quite a few times as well. THIS IS NORMAL. Just keep clicking YES until you get another error message saying "RUN TIME ERROR" (see pic below).





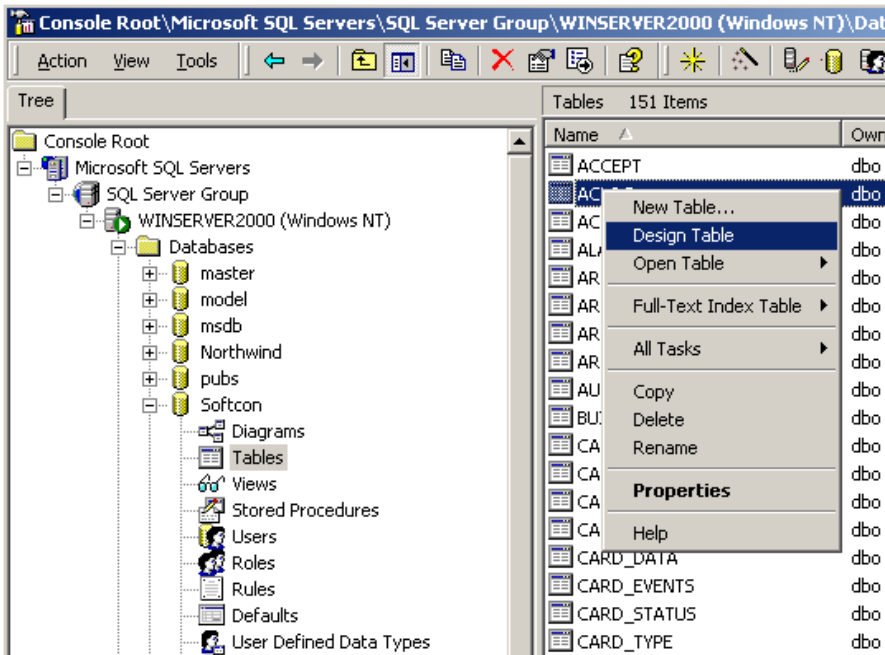
27. Make a note of the error message. Above picture you will notice the DATA SOURCE = Softcon Accumulation database, in the ACLOG table on the Reference field.

28. Go to your “Softcon Accumulation Data Base” in SQL databases. Click on tables. Open the ACLOG table. See picture.

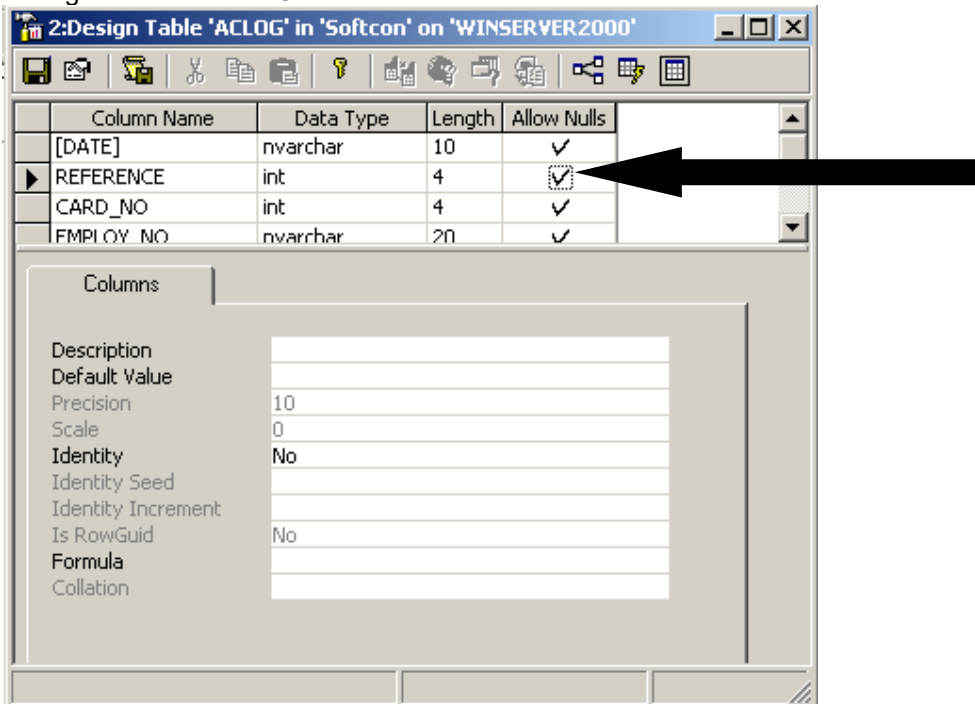


29. On the “REFERENCE” row in the “NULLS” column you will see that there is a tick mark. You now have to remove it.

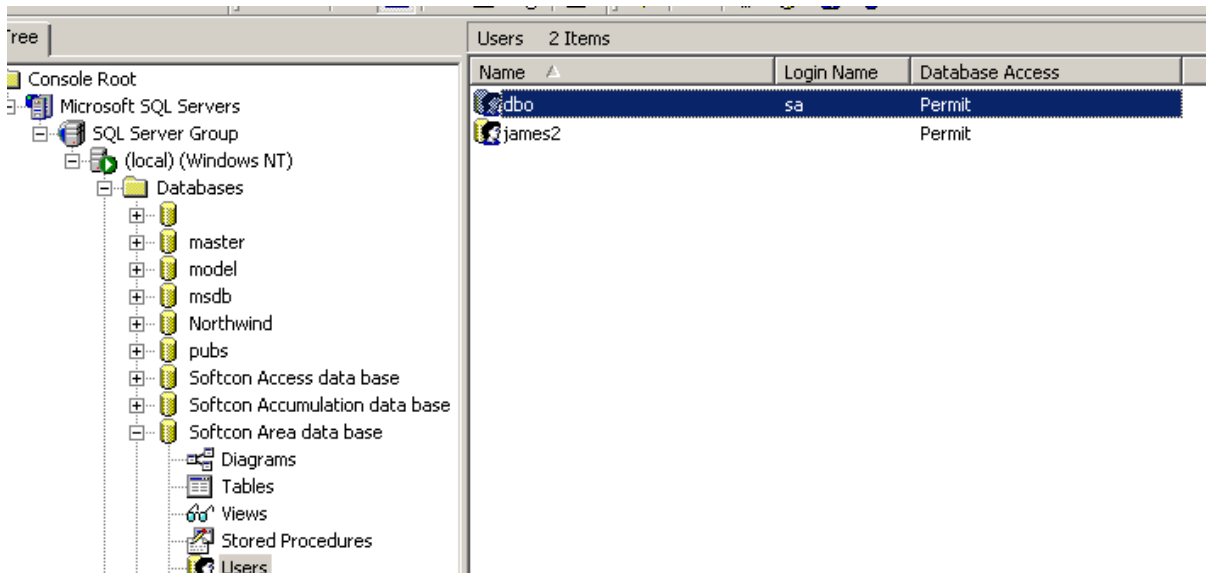
30. To do this go back to the table and right click the “ACLOG” table. Select “Design table”.



31. In this new window you have to uncheck (remove the check mark) in the cell under “Allow Nulls” and to the right of “REFERENCE”.



32. Close the window and when asked to save click YES. (Do this for the same on all RUN TIME ERRORS).
33. Restart your server and follow the above steps on all errors. If an error arises where the “NULL” values have already been unchecked then just check them (i.e. do the opposite of the error).
34. Make sure the default password for the SQL SERVER is as follows.



35. For Reports the following changes in the access.cfg

```

APPLICATION SYSTEM
  DEFINE SERVER          "c:"
//DEFINE REMOTESERVER   "D:"

DEFINE SQLSERVER      "sa" "" // @sql when using SQL server "user_name" "password"
DEFINE DB_ACCESS_WORK   DEF+ SERVER "\softwin3\database "
DEFINE DB_ACCESS_FILE   DEF+ SERVER "\softwin3\database\ACCESS.MDB"
DEFINE DB_ACCESS_DBASE  "Softcon Access data base"
// DEFINE DB_ACCESS_ODBC "Microsoft Access Driver (*.mdb)"
DEFINE DB_ACCESS_ODBC  "SQL Server" //@sql sql server driver name

DEFINE DB_AREA_WORK     DEF+ SERVER "\softwin3\database "
DEFINE DB_AREA_FILE     DEF+ SERVER "\softwin3\database\AREA.MDB"
DEFINE DB_AREA_DBASE    "Softcon Area data base"
// DEFINE DB_AREA_ODBC  "Microsoft Access Driver (*.mdb)"
DEFINE DB_AREA_ODBC    "SQL Server" //@sql sql server driver name

DEFINE DB_CARD_FILE     DEF+ SERVER "\softwin3\database\CARD.MDB"
DEFINE DB_CARD_WORK     DEF+ SERVER "\softwin3\database"
DEFINE DB_CARD_DBASE    "Softcon Card data base"
// DEFINE DB_CARD_ODBC  "Microsoft Access Driver (*.mdb)"
DEFINE DB_CARD_ODBC    "SQL Server" //@sql sql server driver name

DEFINE DRIVE_CONFIG     "C:"
DEFINE PATH_CONFIG      "\SOFTWIN\CONFIG\"
DEFINE DRIVE_PATH_CONFIG DEF* DRIVE_CONFIG PATH_CONFIG

DEFINE DB_AUDIT_WORK    "c:\softwin3\database"
DEFINE DB_AUDIT_FILE    "c:\softwin3\database\AUDIT.MDB"
DEFINE DB_AUDIT_DBASE   "Softcon Audit Log data base"
DEFINE DB_AUDIT_ODBC    "Microsoft Access Driver (*.mdb)"

DEFINE DB_LOGGING_WORK  "c:\softwin3\database"
DEFINE DB_LOGGING_FILE  "c:\softwin3\database\LOGGING.MDB"
DEFINE DB_LOGGING_DBASE "Softcon Single Log data base"
DEFINE DB_LOGGING_ODBC  "Microsoft Access Driver (*.mdb)"

DEFINE DB_ACCUME_WORK   "c:\softwin3\database"
DEFINE DB_ACCUME_FILE   "c:\softwin3\database\ACCUME.MDB"
DEFINE DB_ACCUME_DBASE  "Softcon Accumulation data base"
// DEFINE DB_ACCUME_ODBC "Microsoft Access Driver (*.mdb)"
DEFINE DB_ACCUME_ODBC  "SQL Server" //@sql sql server driver name

DEFINE DB_REPORT_WORK   "c:\softwin3\database"
DEFINE DB_REPORT_FILE   "c:\softwin3\database\REPORT.MDB"

```

```

DEFINE DB_REPORT_DBASE      "Softcon Report db"
// DEFINE DB_REPORT_ODBC    "Microsoft Access Driver (*.mdb)"
DEFINE DB_REPORT_ODBC      "SQL Server"      //@sql sql server driver name

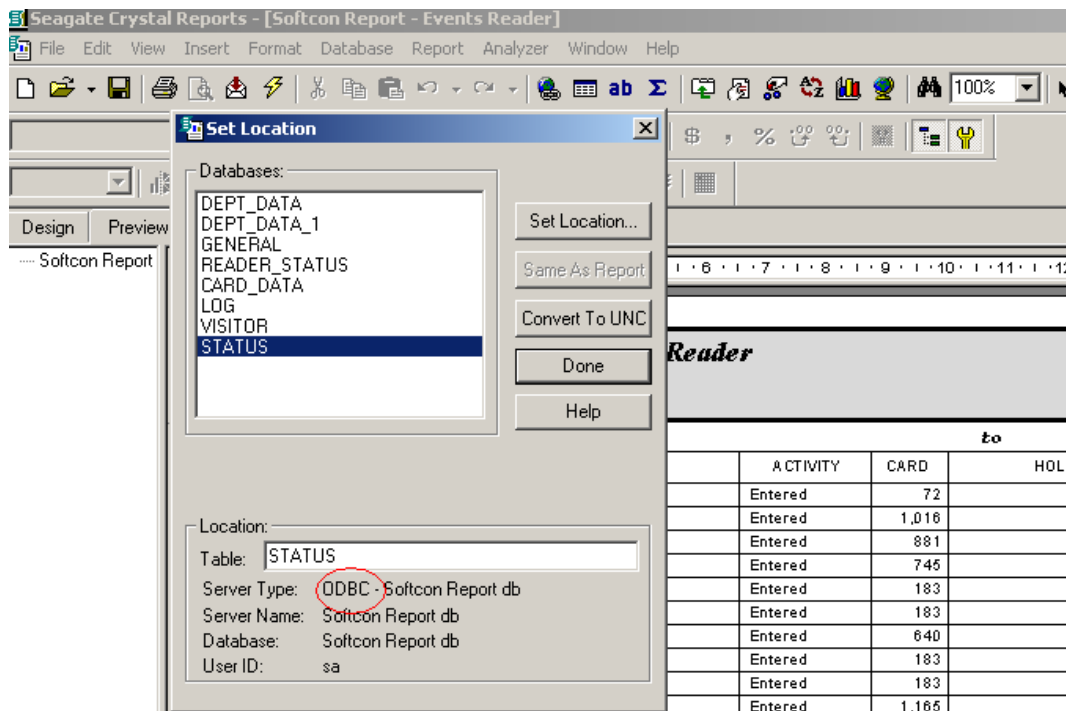
DEFINE DB_VISITOR_FILE      DEF+ SERVER "\\softwin3\database\VISITOR.MDB"
DEFINE DB_VISITOR_WORK      DEF DB_ACCESS_WORK
DEFINE DB_VISITOR_DBASE     "Softcon Visitor data base"
// DEFINE DB_VISITOR_ODBC   "Microsoft Access Driver (*.mdb)"
DEFINE DB_VISITOR_ODBC     "SQL Server"      //@sql sql server driver name

DEFINE DB_VEND_WORK         DEF+ SERVER "\\softwin3\database"
DEFINE DB_VEND_FILE         DEF+ SERVER "\\softwin3\database\VEND.MDB"
DEFINE DB_VEND_DBASE        "Softcon Vending data base"
// DEFINE DB_VEND_ODBC      "Microsoft Access Driver (*.mdb)"
DEFINE DB_VEND_ODBC        "SQL Server"      //@sql sql server driver name

```

36. For existing \*.RPT to work make sure the report are a s configured as follows.

Server Type ODBC  
User ID sa



37. For a new installation copy All the \*.RPTs from the SQL folder to softWin3\abase\ folder.

### **MINIMUM REQUIREMENTS**

1. Anything less JUST WON'T WORK!!!!!!
2. PENTIUM 3 600mHz or equivalent
3. 256Mb Ram
4. Windows 2000 (Server is preferred but it will run with limits on Professional)
5. SVGA with 32Mb Ram and 800 x 600 resolution
6. Spare PCI Slot (for Mux Card)