



SW3 Email Report How2

Revision 001

10 July 2022

Revision History

Version	Date	Person	Reason For Changes
001	2022-07-10	MTL	Initial

CONTENTS

1	AIM	3
2	GENERAL	3
3	EMAIL SETTINGS	3
4	EMAIL RECIPIENTS	3
5	EVENTS	4
	5.1 TIMED EVENT (TIGGER TO EVENT-EVENT)	4
	5.2 EVENT EVENT (TIGGER TO EXE-EVENT, TIMER)	5
	5.3 EXE EVENT (RUN SCS_REPORT.EXE)	5
	5.4 TIMER (STARTS SCS_EMAIL.EXE)	6
	5.5 EMAIL EVENT	7
6	EMAIL LOG FILE	8

1 AIM

The aim and goal of this .PDF document is to serve as addition help manual for the use of the Softcon program SoftWin 3 (SW3).

This document describes how to automatically generate and email a report (e.g. daily).

This extract information from the documents:

- SCS_sw3_Client.help
- SCS_sw3_Events.help
- SCS_sw3_Reports.help
- SCS_sw3_Email.help

2 GENERAL

To auto create and email a report requires using events to trigger the process as follows:

1. A **Timed_Event** is set (e.g. daily) to generate an event to trigger an **Exe_Event**.
2. This **Exe_Event** starts SCS_Report.exe to run the required report, saving it to a file.
A parameter starting SCS_Report results in SCS_Report creating a new event when the completing the report.
3. This SCS_Report created event triggers an email.

To run reports, SCS_RepServer.exe must be running (linked to the running SCS_Server).

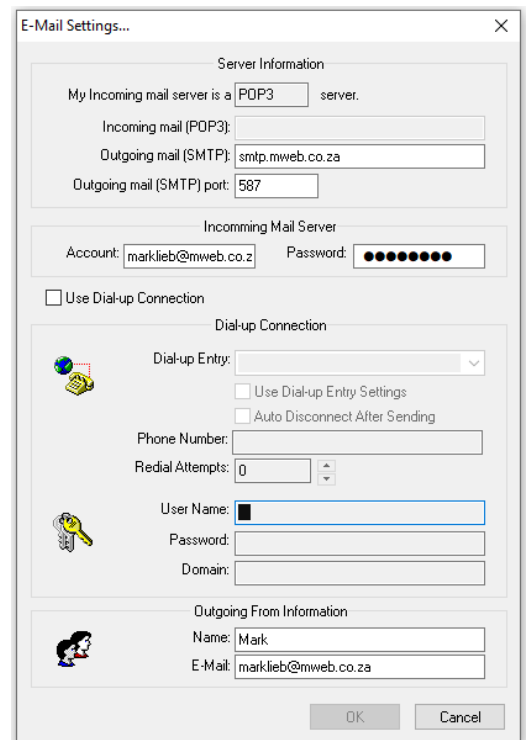
To email, SCS_Email.exe must be running (linked to the running SCS_Server).



3 EMAIL SETTINGS

See Email settings in the document SCS_sw3_Email.help on how to set the email communication parameters.

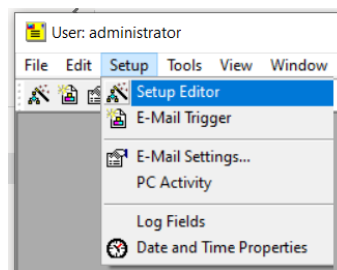
Note that after changing these settings, restart SCS_Email.



4 EMAIL RECIPIENTS

In SCS_Email, select Setup, Setup Editor, Recipients to enter email addresses.

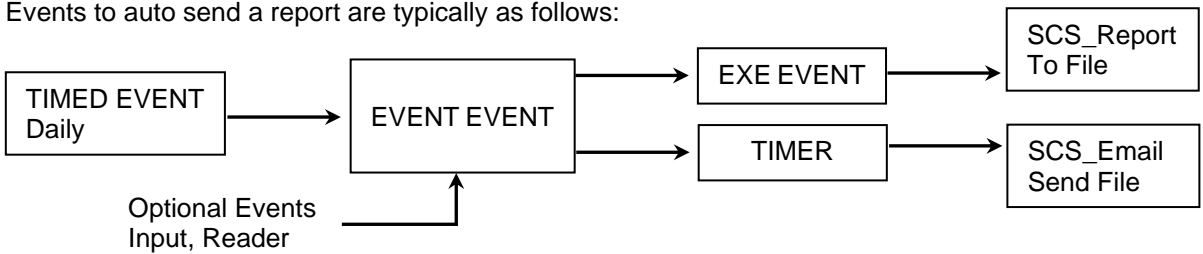
Ref	Name	E-Mail Address
1	Mark	mark@softconserv.com
2	To 2	



These are used in Email trigger setup.

5 EVENTS

Events to auto send a report are typically as follows:



Timer is required to have a delay for the report to be completed before the email is sent.

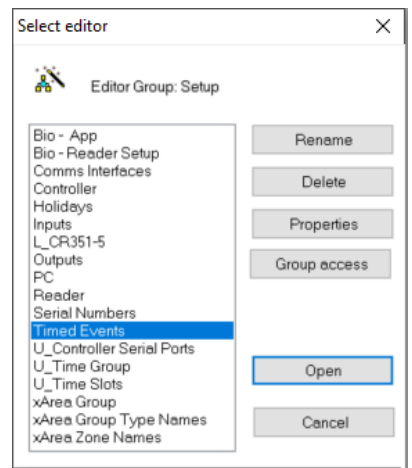
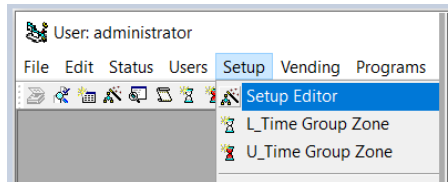


5.1 TIMED EVENT (TIGGER TO EVENT-EVENT)

A timed event (e.g. daily) generates an event to trigger an exe event that will start SCS_Report.

In SCS_Client, select Setup, Setup Editor and Open Timed Events.

If the Timed Events option is not visible in Setup/Setup editor, make the menu selection visible (newer version via Group access).



Ref	Description	Last Done	Next	PC	Repeat	Skipped	Type	Sys	STAT	Val...	Xref	Alarm
1	Backup	2022/07/11 21:33:22	2022/07/12 21:33:00	Mark-NBK	0000-00-01 00:00	Not do any missed ev	System	100	Backup	100	100	Unknown
2	Report Check Failed	2022/07/11 21:35:49	2022/07/12	Mark-NBK	0000-00-01 00:00	Not do any missed ev	System	100	Timed Event	81	81	Unknown

Edit an unused Timed event (or the one that has been set previously).

A PC must be set to do the event.

The repeat is the period when to generate the event: yyyy-mm-dd hh:mm. As shown dd = 01, hence once a day.

The Next field shows when it will be done next (this is changed when the event occurs).

To set that the event must be done at a specific time (e.g. at 00:00), change the Next time as required.

If this field is not editable, change to editable (right-click on any column header, say on Next) and click on the eye icon to change it to a pencil). **After edit Click on any parameter ON THE SAME LINE.**

The skipped field can be set to do misses events (e.g. the PC was off when a backup should have been done).

Set this to No do if the report is set to today (the current day) as the port will only contain information of today.

If the PC was off when the report, then a report will have to be done manually.

Alternatively, set the report to run at 00:00 and set the Report start and end to be today -1 (yesterday) and set Skipped to be Do Only Lasted Skipped. This will require that the program must be running at least once a day.

The event with the settings for Type, Sys, Value, Stat, Xref and Alarm is generated.

The values of these must be such that it will not result in an event that will trigger anything else.

Set the values shown.

If Status 90 (Timed Event) does not exist, edit table Status in c:\softwin3\database\Report.mdb.

Alternatively replace Report.mdb (passwords are lost) or replace table Status from later versions (Default).

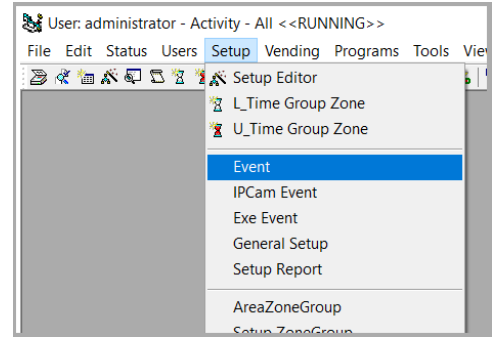
Alternatively select an unused status.

Type 10 Number(sys) 100 Status 90 Xref 100 Value 100 Alarm 0



5.2 EVENT EVENT (TIGGER TO EXE-EVENT, TIMER)

Select an unused event and edit an appropriate name or open the event already set.



This example shows 3 events that will start the process.

Trigger 10: This is the event generated by the timed event.

Trigger 11: Generated when Input named "Run Failed Report" (e.g. input 8 on Controller 1) goes to level (value) 1 (button pushed).

Trigger 12: When user 262 (card holder) enters at reader "Reception to Admin" (e.g. reader 2 on Controller 1).

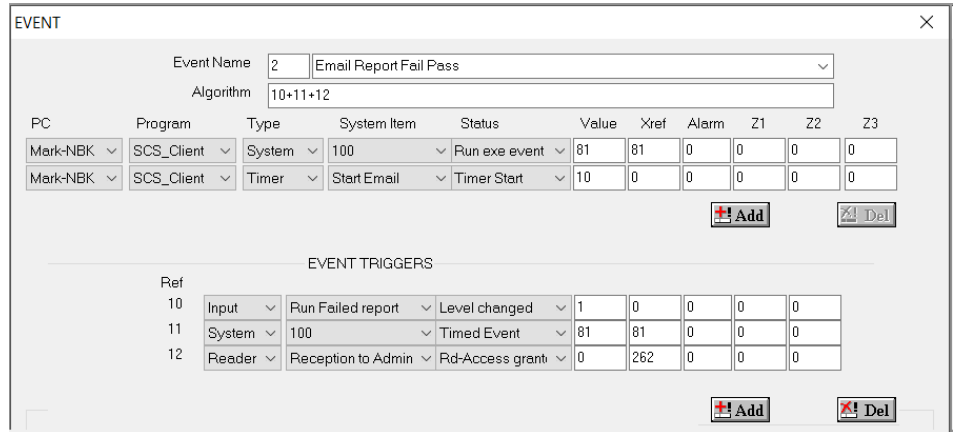
The events generated are:

Run exe event (tigger to exe event)

Start timer (trigger to start a timer).

Value (10) is timeout in seconds.

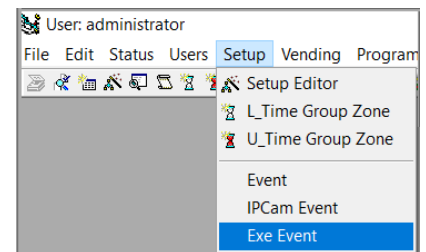
If zero, the reload value in the timer setup is used (see below)



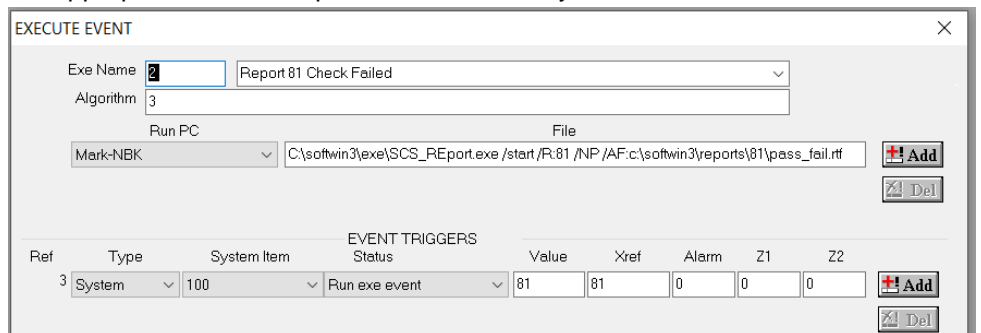
5.3 EXE EVENT (RUN SCS_REPORT.EXE)

An exe event, triggered by the event event (above) is set to start SCS_Report.exe

Select Setup, Exe Event.



Select an unused event and edit an appropriate name or open the event already set.



All the parameter that can be set to SCS_Report are listed in SCS_sw3_Report.help.

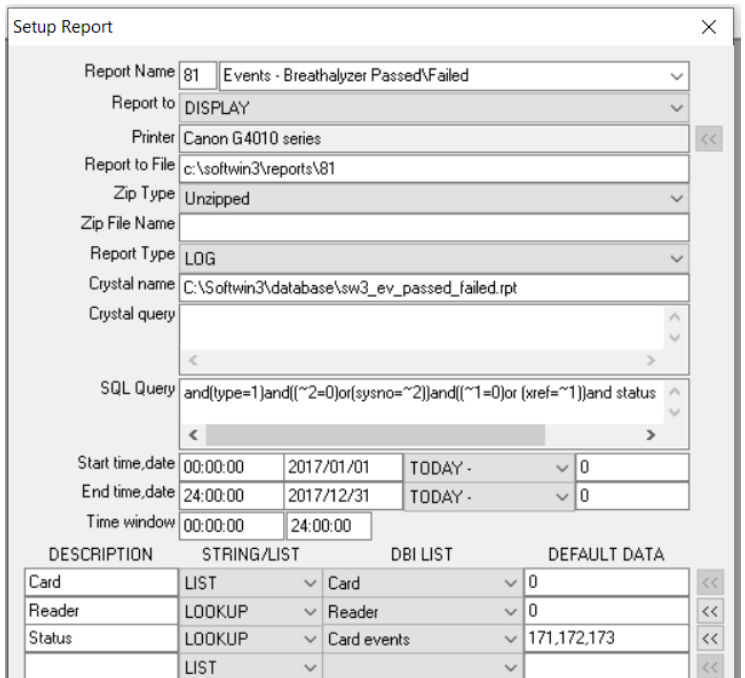
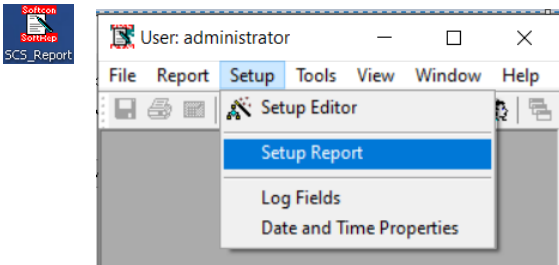
/start starts SCS_Report if closed.

/R sets the report to be created

/NP No prompt = Use the default parameters.

/AF Auto File = File to be created. **Must have path and file name.**

The report (81 in this example) must have **Report To File set with path only** – as shown here (in SCS_Report.exe



Random check events are:

Fail	171
Pass	172
TimeOut	173

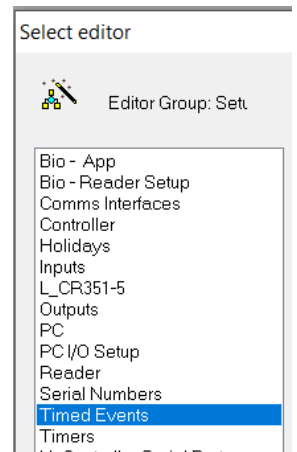
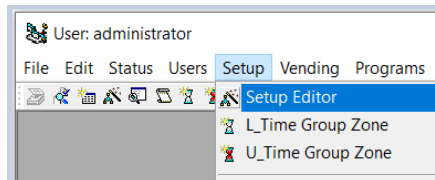
Edit the Status setting (Default Data) for the events required in the report.



5.4 TIMER (STARTS SCS_EMAIL.EXE)

Timer is started to give SCS_Report time to complete the report before SCS_Email is started.

Select Setup Editor – Timed Events.



Edit an unused Timer of select timer created.

T Reload (seconds the timer runs) is used if the event that started the timer has V=0
In the example, set to 10 by the trigger above

T Event is the event generated when the timer completes.

ResToutRep sets what must be done when the timer is complete (Timer Tmout).

To do the trigger, an Evn (event) option must be selected.

A Log option results the event being logged.

Dis (display) option results in the event being displayed (activity)

Name	TriggerEvent	T Reload	T Remain	T Event	T DT	Res ToutRep
1 Start Email	t10 n100 s90 x81 v81 a0	15	10	t10 n100 s466 v81 x81	2022/07/11 21:35:59	Evn,Log,Dis
2 zT 2		0	0			

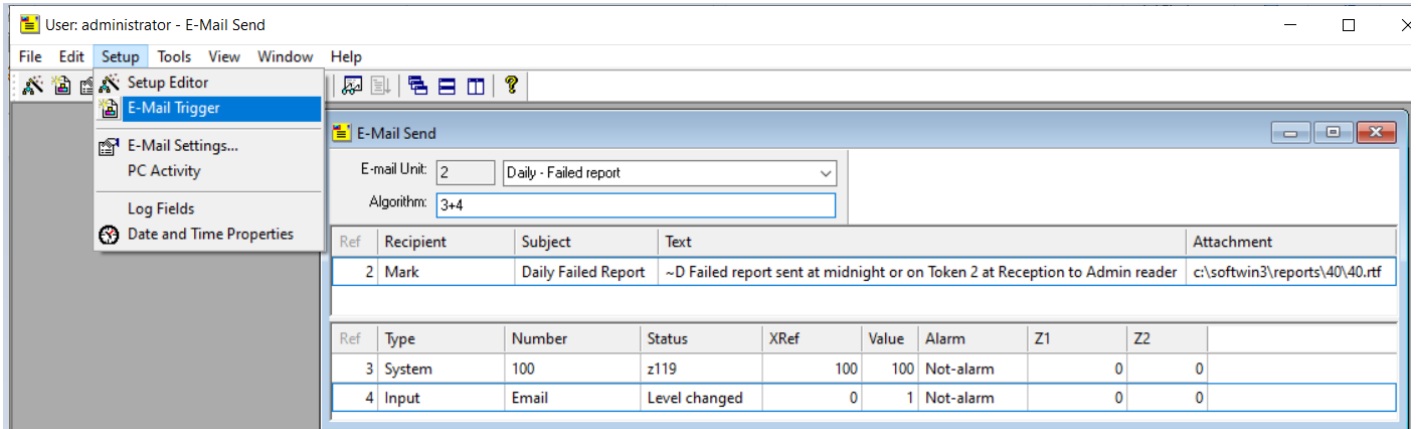


5.5 EMAIL EVENT

In the SW3 Application SCS_EMAIL.exe, trigger events are set to send emails

An exe event, triggered by SCS_Report when completed (above) is set to start SCS_EMAIL.exe.

In SCS_Email, Setup, select E-Mail Trigger and select an unused E-mail Unit (or se the one that has been set).



The bottom section is the trigger(s) that execute the middle section according to the set Algorithm (that must be true).

To add more triggers or emails to send, right click in the appropriate and select Add and set more recipients (text and attachments can be changed).

Similarly, an additional email could be sent to the same recipients, with different file (e.g. a setup file).

To delete, right click on the line to delete and select delete.

In the example given in the document, the trigger (bottom section) is the event generated by SCS_Report when the reports is done. This event set as parameter when SCS_Report was started in the Exe_Event above.

As added example, an input can trigger the resending of the email.

Note that the Text in the report can contain commands that result in data being inserted in the text, e.g. ~D for date. See SCS_sw3_Email.help for the full list of command that can be inserted.

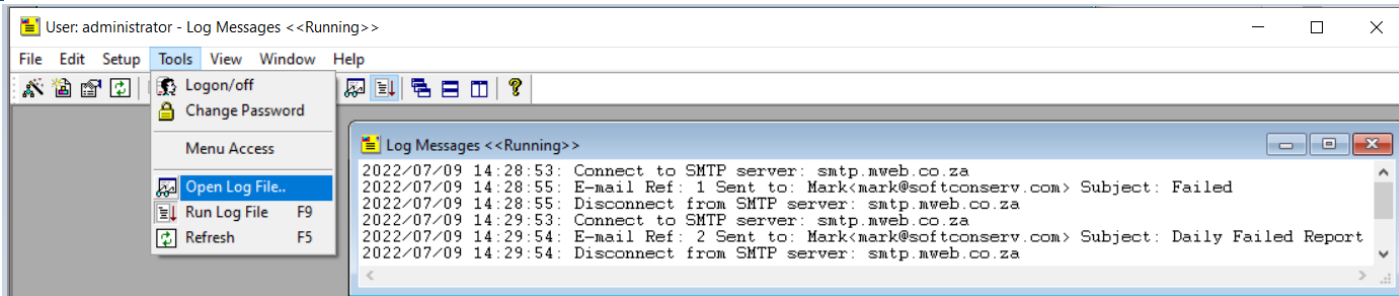
6 EMAIL LOG FILE

Email events:

- 460 Email: Sent. t10, n=computer ref, x=Operator ref, v=email_to ref
- 461 Email: No dial-up connection.
- 462 Email: No SMTP connection.
- 463 Email: Send error.
- 464 Email: Operator close App.
- 465 Email: Attachment error.



In SCS_Email, a window can be opened to show email events:



To clear this window, Right click on this widow and select clear.