



# SW3 Install How2

**Revision 007**

**25 July 2023**

# Revision History

Version	Date	Person	Reason For Changes
001	2021-06-11	MTL	Initial
002	2021-06-21	MTL	General additions
003	2021-06-29	MTL	SCS_Vistor_Scan must be uninstalled
004	2021-08-15	MTL	Add default config/database
005	2021-09-03	MTL	Add Windows Server 2019 (run as administrator)
006	2021-10-22	MTL	Expand on additional client Applications
007	2023-07-25	MTL	Add upgrade in section 3, correct minimum PC spec Add SW3 1.4.06 does 12 digit number, last not need CR355 EPROM update Correct document links

## CONTENTS

1	AIM	3
2	GENERAL	3
3	NEW / UPGRADE	3
4	INSTALL	5
	4.1 SQL	5
	4.2 SOFTWIN3_???.ZIP	5
	4.3 SW3_SETUP.EXE	5
	4.4 SCS_BIO – INSTALL.EXE	5
	4.5 SCS_ZK_PUSHSERVER – SETUP.EXE	5
	4.6 SCS_CONTROLLER	5
	4.7 SCS_VISTOR_SCAN – SETUP.EXE	5
	4.8 SW3_SYNC	5
	4.9 HELP	5
	4.10 DEFAULT CONFIG / DATABASE	6
5	START-UP	6
6	LICENSE KEYS	7

# 1 AIM

The aim and goal of this .PDF document is to provide installation instructions for the Softcon program SoftWin 3 (SW3).

## 2 GENERAL

All functions of the Softcon systems are listed in the specification [Softcon BMS specification](#).

Taken from this document, the requirements for Softwin3 are:

PC HW minimum requirements:

- I3 2.3GHz.
- 2 Gig Memory.
- 250 Gig HDD Space.
- CDROM.
- TCP/IP.
- 1024 X 768 resolution Screen.

HW minimum requirements for SQL Client PC:

- I5 3.0GHz.
- 8 Gig Memory.
- 250 Gig HDD Space.
- TCP/IP.
- 1024 X 768 resolution Screen.
- Windows 10 Professional

HW minimum requirements for SQL Server PC:

- Intel Zeon 3.2GHz or equivalent AMD.
- 32 Gig Memory.
- 1TB SSD or M.2 SSD.
- 10 GB TCP/IP.
- Windows Server 2016 and up.
- SQL Server 2017 Standard and up.

Software Requirements any of: (note professional or server, not home)

- Windows 7 Professional.
- Windows 8.1 Professional.
- Windows 10 Professional.
- Windows 11 Professional.
- Windows Server 2008, 2012, 2016, 2019 (run as administrator)

Database, any of:

- MS Access (does not have to be installed)
- SQL Server 2008, 2012, 2014, 2016, 2018.
- SQL Server 2008, 2012, 2014, 2016, 2018 Express.

## 3 NEW / UPGRADE

Installing a new or upgrading the SW on an existing site, follows the same process in the INSTALL section below. Before upgrading, it is suggested that a backup is done and make a copy of c:\softwin3.

**The upgrade is installed (as below) over the exiting SW3 installation.**

All SW3 Apps (SCS\_Client, SCS\_Draw, SCS\_Report, etc. must be closed.

The SCS\_Report\_Server and SCS\_Server must be stopped (note that these could be running in the background) by log-on and stop and closed.

It is suggested that that Report.mdb be deleted as many new options may be added into this database.

If the site has created own reports, the table REPORT must be copied back into the new REPORT.mdb.

The document **SoftWin3 Readme Version xxx.pdf** in the unzipped directory (see below).

Softwin3\_xxxx lists the changes from the previous version.

The document **SCS\_sw3\_Readme.pdf** in the help folder (see below), lists the changes for all version 1.04.32 and thereafter.

### UPGRADING

Each version may have additions / changes to databases.

The existing version uses database structures as defined in **c:\softwin3\config\database.mdb**.

When updating, the install sets the new structure required in **c:\softwin3\config\default\database.mdb**.

The install program executes c:\softwin3\SCS\_ConfigSync.exe to transfer changes in config\default\database.mdb to

config\database.mdb.

**SCS\_ConfigSync.exe** can be run at any or numerous times – it simply updates c:\softwin3\config\database.mdb if different.

**SCS\_Server.exe** compares existing c:\softwin3\database\\*.mdb or SQL to structure defined in c:\softwin3\config\database.mdb.

Warnings or differences are shown, if accepted – the changes are done to the databases.

Other errors (e.g. missing F\_?? field) could be the result of version mismatches, typically:

SCS\_ConfigSync.exe was not executed, or not with default\config\database.mdb matching the version installed.

Load the correct c:\softwin3\config\default\database.mdb and execute c:\softwin3\exe\SCS\_ConfigSync.exe.

Install also copies default databases as shipped with the version (structure as expected) to folder c:\softwin3\database\default.

**NOTE:** Upgrading from versions older than 1.4.32 to 1.4.32 or later, requires that 1.04.32 be installed – this alters many databases and executes SCS\_ConfigSync.exe.

If using the install, SCS\_ConfigSync is automatically executed, hence no need to run SCS\_Server.

SW3 Version 1.4.06 or later is required for CR391 controllers using random database.

SW3 Version 1.4.07 and later require CR355 controller with EPROM 2.60.

## 4 INSTALL

### 4.1 SQL

If using SQL database, the SQL database drivers must be installed.  
Is using MS Access, no additional database programs are required.  
See the document [SCS\\_sw3\\_dB.how2.pdf](#).

### 4.2 SOFTWIN3\_???.ZIP

New installations are provided with a memory stick containing all documents, help files, presentations, videos and latest SW and FW version.

The latest SW3 is available on [www.softconserv.com](http://www.softconserv.com) / download / SCS\_Software SW3.  
Note that version 1.04.32 is also provided.

**When upgrading versions older than 1.04.32, this interim version must be installed (no need to execute the applications – only install).** This transfers to transfer old setup and user data to new versions.

**The Softwin3 zipped file must be unzipped on C:\ where Softwin3 must be installed.**

### 4.3 SW3\_SETUP.EXE

SW3 is installed by running (double click) Sw3\_Setup.exe in the C:\Softwin3\_xxx\Softwin3\_xxx\ folder.

Run as administrator.

If Windows has issues running this, select Softwin3.msi in the Libs folder.

Follow the instructions.

By continually selecting next install by default to use MS Access as database.

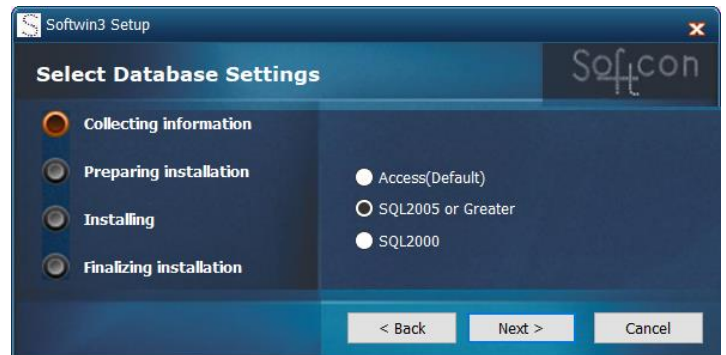
This is sufficient for most installations and a direct database editor (dBEedit) is included with the installation.

If requiring SQL database (requires knowledge is SQL databases and tools), select the SQL option.

See the documents:

[SCS\\_sw3\\_dB\\_access.how2](#)

[SCS\\_sw3\\_dB\\_SQL.how2](#)



### 4.4 SCS\_BIO – INSTALL.EXE

**Optional:** If Biometric readers (Bio) are used on the site, the Bio install must be done after SW3 is installed.

### 4.5 SCS\_ZK\_PUSHSERVER – SETUP.EXE

**Optional:** If ZK speed face Bio is used on the site, this setup must be runs after the SW3 and Bio installs.

### 4.6 SCS\_CONTROLLER

**Optional:** Folder SCS\_Controller containing the application (App) SCS\_Controller.

This App connects directly to any CR391 controller in the Universal mode via a second TCP socket.

This folder can simply be copied where required.

If the App is required on the same PC, the suggestion is to copy this folder to c:\softwin3.

### 4.7 SCS\_VISTOR\_SCAN – SETUP.EXE

**Optional:** Run this file if the site uses the Visitor Scan Apps (VS100, VS200).

Note that when updating, the old version must be uninstalled.

### 4.8 SW3\_SYNC

**Optional:** This App installs the SQL shared table – exchanging data between SW3 and external files (e.g. the user profile data). This requires that SW3 must use SQL and not MSAccess databases.

The document [SCS\\_sw3\\_Sync.help](#) provides instructions.

### 4.9 HELP

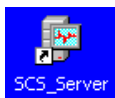
Copy this folder to c:\Softwin3  
 When click on help topic in any application – the appropriate .pdf help file is opened.

## 4.10 DEFAULT CONFIG / DATABASE

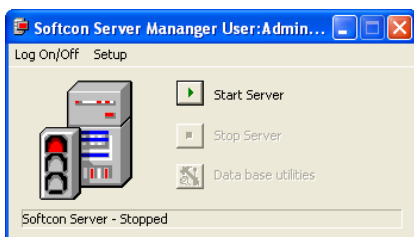
Note that certain 1.4.62 default setting are not correct:  
 odd numbered readers operational settings are isolated  
 output 1 operational setting is isolated  
 lock outputs are duplicated per controller (legacy).

Unzip default\_config to to c:\Softwin3\config\default and for new installations also to c:\Softwin3\config.  
 Unzip default\_database to c:\Softwin3\atabase\default and for new installations to c:\Softwin3\database.  
 Running the Addition.bat file provided with the Softcon USB (Software\Softwin3\Additions folder).

## 5 START-UP



The Softcon program SCS\_Server.exe must be running before the client program is started.  
 SCS\_Server is started by clicking on the icon (desktop or in start / programs / softwin3) or automatically is installed in the start-up (C:\Documents and Settings\All Users\Start Menu\Programs\Startup).



Selecting the Start Server button runs the program.  
 A server icon to the task bar (bottom right) indicates status of the server:  
 stopped. busy initializing. running.

On starting, databases are opened, checked and corrected.

When starting SCS\_Server, can be added after filename, separated by spaces (e.g. SCS\_server.exe /start /audit). To add the parameters in the icon, right click on the icon and select properties\shortcut. Parameters are:

- /start** automatically runs the program (eliminates the need to select the Start Server button).
- /audit** enables the audit of edit changes (operator edit changes are logged to file).
- /language** selects a non-English language.
- /enabled** selects that enabled events are logged.

See [SCS\\_Client.Help](#)

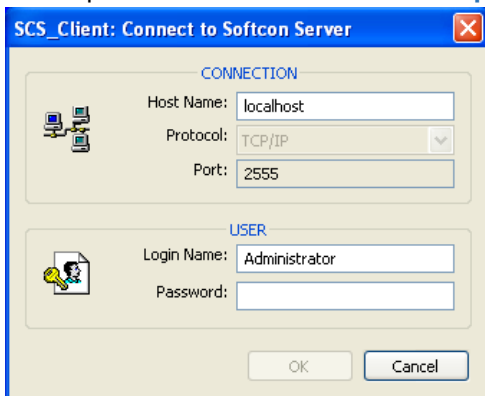
Right clicking on the title bar (top blue section) and selecting **help about**, or starting with the parameter **/?** lists all options.



SCS\_Client can be started via the icon with the following parameters:

- /start** Starts and links to the previous server selected, with the password shut down with.
  - /start:???** Starts and links to server running on PC ???, with the password shut down with.
- ??? is the network name or IP address of the PC.

These parameters can be viewed in **help about** or by starting the program with the parameter **/?**



When not start with /start, a connection and logon box is displayed.

The **Host Name** is the network name of the PC where SCS\_Server is running. If on the same PC, **localhost** can be entered.

**Protocol** and **Port** are currently fixed and cannot be edited (future options).

Default **Login Name** and **Password** is Administrator (caps ignored) and Admin (capital A).

See SCS\_Client to change or add Operator and passwords.

When SCS\_Client start running the following occurs:

- Initialises the server for communication.
- Creates and opens Comms Interface, Event log-files.
- Starts the RPC service.
- Connects to the server application and receives the client RAM information.
- Creates the client RAM temporary tables and loads and checks the client RAM.
- Starts the tasks - connection, analyse, Comms Interface, COM port and User manage.



The program SCS\_Start.exe can be used to start server and client. is passed the programs to be started (separated by spaces), preceded by the parameters that are to be passed to them – e.g.

SCS\_Start.exe \start \audit SCS\_Server.exe SCS\_Client.exe

See [SCS\\_Client.Help](#) for instructions to install multiple Applications (e.g. multiple SCS\_Client programs).

### ADDITIONAL PCs

When SCS\_Client is run on another PC (not on the PC where SCS\_Server is running) – this could be the only SCS\_Client or additional SCS\_Client applications, a full install must be done on that (those) PC(s).

**Only SCS\_Client is run, not SCS\_Server or SCS\_Start.**

### ALL SOFTWIN3 INSTALLATIONS (on server and additional PCs) MUST BE THE SAME VERSION

The host name must be the PC name or the IP address of the PC where SCS\_Server is running – **not localhost.**

When installing on multiple PCs, IP addresses and selection of what activity must be seen is set for each PC in SCS\_Client/setup/setup editor/PC. Set is those PCs must be live to not, local or all events.

## 6 LICENSE KEYS

When initially installed, no functionality is available.

The SW functions are enabled by license keys that are stored in the Comms Interface, i.e. any IP Controller (CntrP). Test and demo keys are available that does not require a Comms Interface (limited options).

See [SCS\\_sw3.CommsInterface.how2](#) on how to connect to a CntrP as interface.

In SCS\_Client, open Setup / Setup Editor / Main Comms Interface.

If connected to the Interface (CntrP), the ID is show (Comms Interface on the second line).

Call Softcon with this number and the SW version at the bottom (simply take a photo of this and send to Softcon).

Key provided by Softcon must be entered in the New Setting line:

Then select << Add.

When all added – select Send (at the bottom)

Option	Current	New
Accumulation	Yes	
Asset Track	Yes	
Attendance	Yes	
Audio	Yes	
Barcode scanner	No	
Biometric Access	No	
Biometric Capture	Yes	
Biometric Readers	50	
Card Makers	5	
Comms Interfaces	200	
Connections	16	
Controllers	200	
Crystal	UNLIMI...	
Distribution	Yes	
Drawings	Yes	
Event	Yes	