



SOFTWARE CONTROL SERVICES (PTY) LTD

475 King's Highway, Lynnwood  
P.O.Box 36675, Menlo Park  
Pretoria, South Africa  
0102

(t) +27 12 348 7301  
(f) +27 12 348 1129  
(e) techsupport@softconserv.com  
www.softconserv.com

# Open too long How2

Version 0. 1

Prepared by: Tihan Du Plooy

Softcon Software Control Services (Pty) Ltd.

2015-3-19

# Revision History

Name	Date	Reason For Changes	Version
MDH	19-Sep-2014	Initial document	0.1
MDH	14-Jul-10	Cover Page	0.2

## Contents

1. Information.....	2
2. Open too long.....	3 - 4

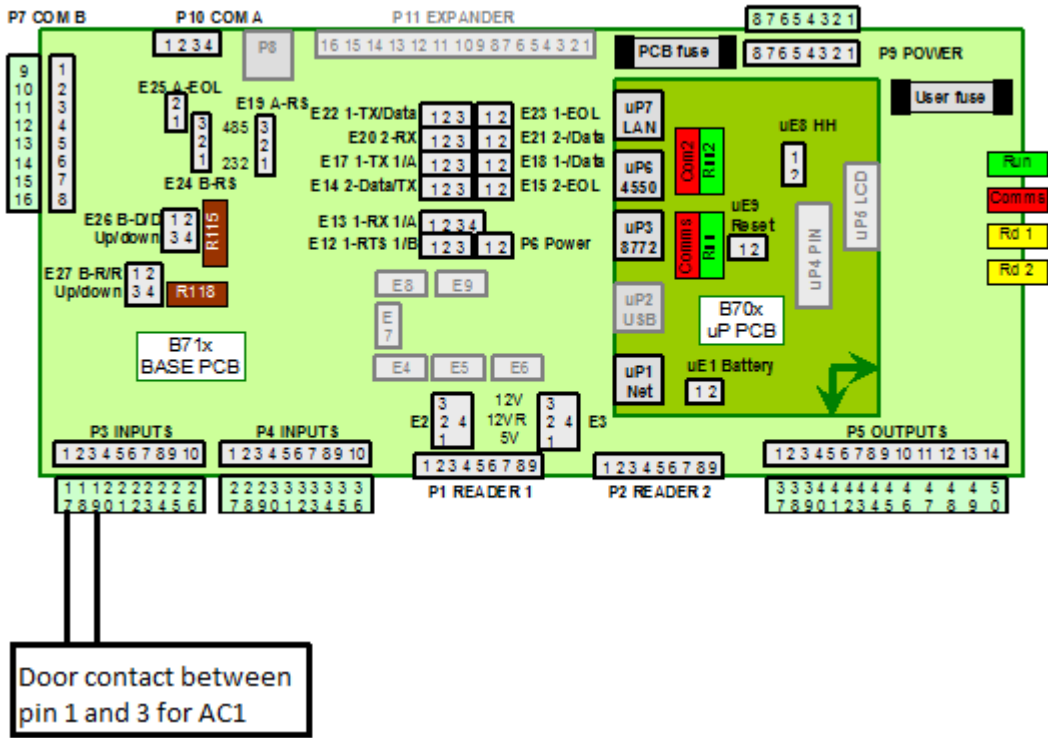
## Information

Open too long gives an indication that the door is opened but not closed.

# Wiring Diagram on the Controller

## CR390 CONNECTIONS

Revision 01.02



# Open too long setup

To setup open too long follow the following steps shown below.

1. In Softwin3 Software click on **Setup** and then on **Setup Editor and the CR351-5 set-up**. See Figure 1 and Figure 2.

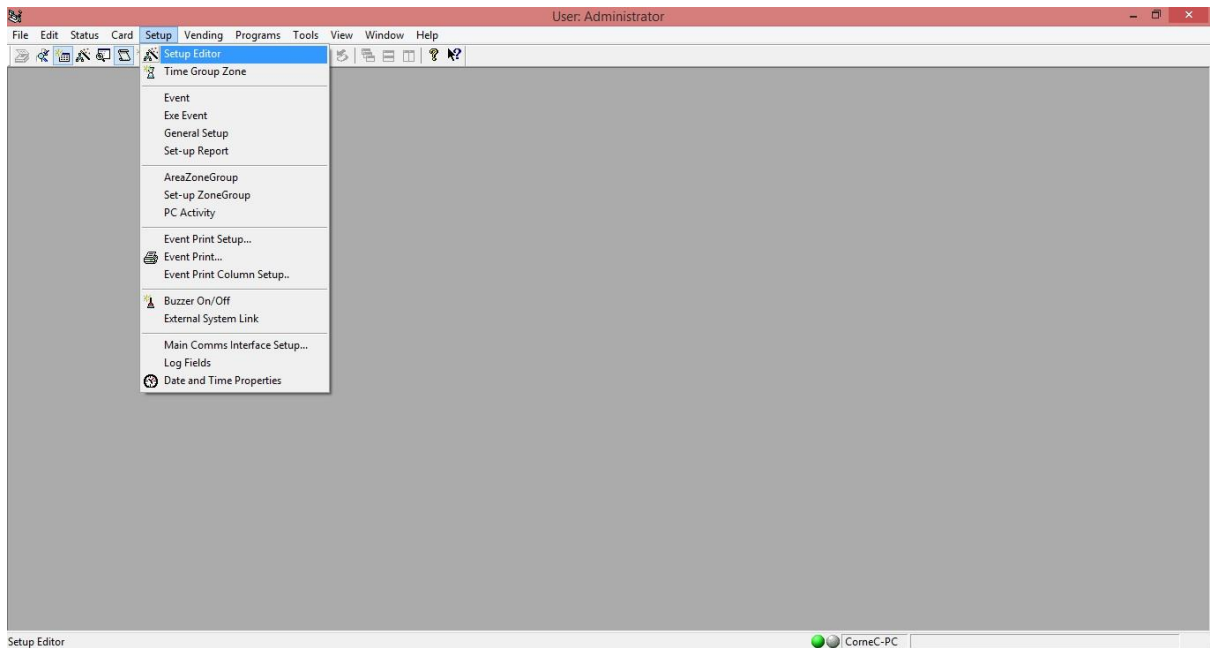


Figure 1

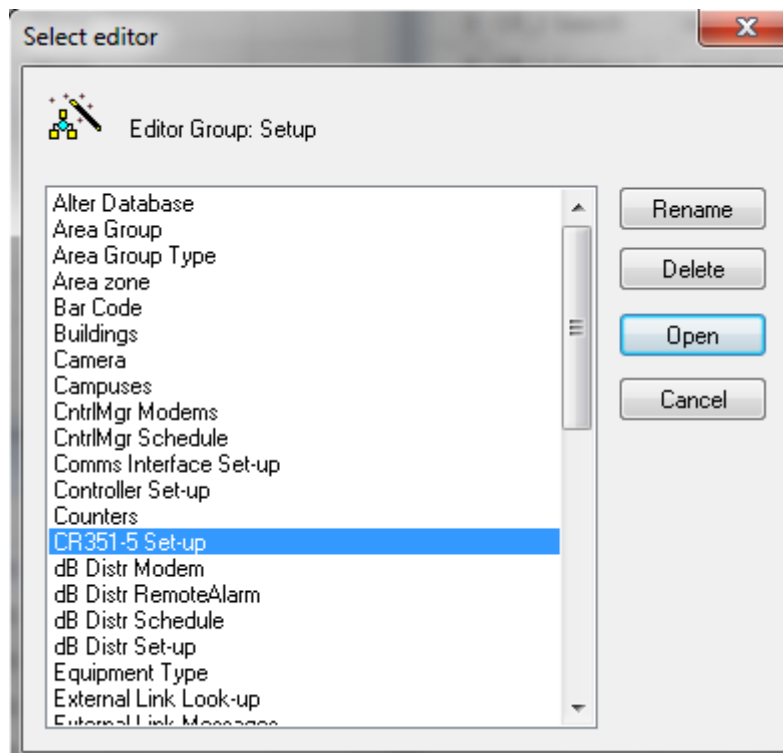


Figure 2

- In the CR-351-5 setup you insert Normally closed underneath the heading Monitor. Then in the heading Too Long, you insert the amount of time the door can stay open before a buzzer go off. See Figure 3.

	Controller	Do...	Latch s...	Latch 1	Latch 2	Monitor	Too long	R1 Capt...	R2 Capt...	Booth	Front module ...	Front module...
1	reception	Two	5	Normal closed	Normal closed	Normal closed	2	None	None	None	No	No
2	manager sales	Two	1	Normal open	Normal open	None	0	None	None	None	No	No
3	main mux	Two	5	Normal closed	Normal closed	None	0	None	None	None	No	No
4	it	Two	5	Normal closed	Normal closed	None	0	None	None	None	No	No

Figure 3