



SOFTWARE CONTROL SERVICES (PTY) LTD

475 King's Highway, Lynnwood
P.O.Box 36675, Menlo Park
Pretoria, South Africa
0102

(t) +27 12 348 7301
(f) +27 12 348 1129
(e) Techsupport@softconserv.com
www.softconserv.com

Output Group How2

Version 3.0

Prepared by: Michael Davis- Hannibal

2015-4-07

Revision History

| Name | Date | Reason For Changes | Version |
|------|-----------|--------------------|---------|
| MDH | 15-Jun-10 | Initial document | 0.1 |
| MDH | 22-Jun-10 | Changes made | 3.0 |

Minimum Requirements:

- **CR390 Version 0.81 or greater**
- **CR355 Version 2.29 or greater**

Description:

Output groups are output events setup on the CR390 controller. (Minimum Requirements are SW Version 1.03.66 and CR390 Version 0.81)

Setting Up:

1. On the Handheld(HH) programmer for the CR390, Enable output groups (see HH programmer guide)
2. In SW, set the reader to random database(DB10)
 - a. Click setup, setup editor, Reader setup. Right click on the reader to be configured.
 - b. Under the area/Type TAB locate the DB Mode.
 - c. In the dropdown list box select 10 Random

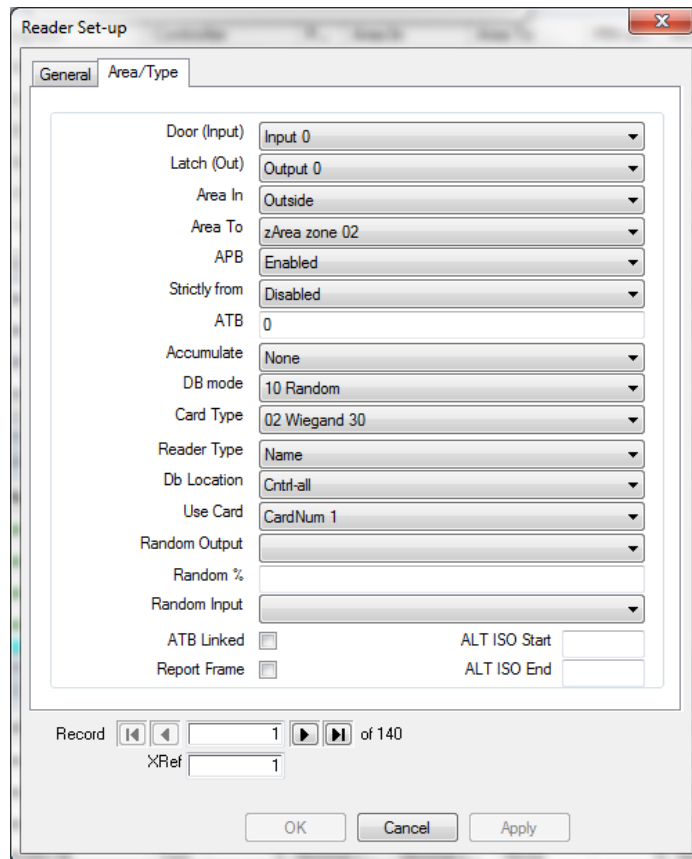


Figure 1: Reader Setup

- a. Set the outputs to AUX outputs(Note that only AUX outputs can be used in Output Group Events)
- d. Click setup, setup editor, output setup
- e. Right click on the required output/s and click on properties
- f. Under the General TAB locate TYPE and set it as AUX Output

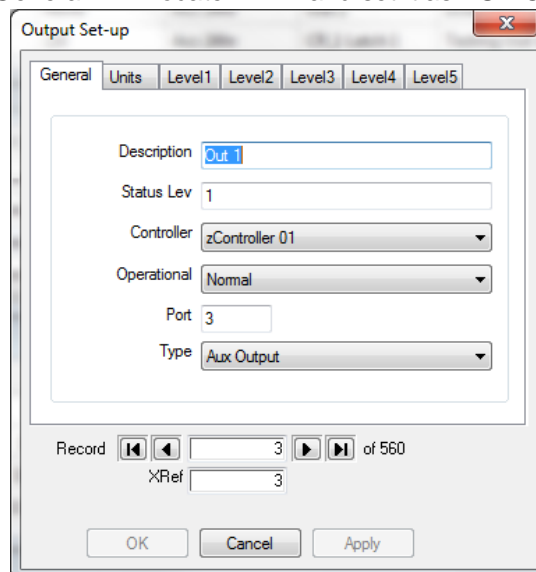


Figure 2: Output Setup Properties

3. In the menu section of Softwin3, Click setup, setup editor and select Output Groups.

- a. This will allow the renaming of the Group Names.
- 4. In the menu section of Softwin3, Click setup, setup editor and select output group event from the list and click on the Open Button. This would open the Output Group Event editor.
 - a. Setup the output group event
 - i. Reader – Select the reader which will trigger the output event
 - ii. Action – Specifies what action the output will perform:
 - 1. Latch time; switch relay state according to latch time
 - 2. None: No action will be taken
 - 3. Off: output will open
 - 4. On: Output will close
 - 5. Toggle: Output will change state. If open will close
 - iii. Time Group – Specify the Time group in which the output event will function(Only Access time groups can be used)
 - iv. Output – Specify the output to be controlled by the output group event
 - v. Output Group – This is the selectection where multiple line can be grouped together. As well as the Group selection in card admin

| Ref | Reader | Action | Time group | Output | Output Group |
|-----|------------|------------|------------|--------------|-----------------|
| 0 | RD 0 | | | | zOutGrp 0 |
| 1 | Dual Badge | Latch time | Acc 24hr | Out 1 | Testing Out GRP |
| 2 | Dual Badge | None | Acc 24hr | Out 2 | Testing Out GRP |
| 3 | Dual Badge | Off | Acc 24hr | CR_1 Latch 1 | Testing Out GRP |
| 4 | Dual Badge | On | Acc 24hr | CR_1 Latch 2 | Testing Out GRP |
| 5 | Dual Badge | Toggle | Acc 24hr | CR_1 Latch 1 | zOutGrp 2 |
| 6 | Dual Badge | Toggle | Acc 24hr | Out 1 | zOutGrp 2 |
| 7 | Dual Badge | Toggle | Acc 24hr | Out 1 | zOutGrp 3 |
| 8 | Dual Badge | Toggle | Acc 24hr | Out 2 | zOutGrp 3 |
| 9 | Dual Badge | Toggle | Acc 24hr | CR_1 Latch 2 | zOutGrp 3 |
| 10 | Dual Badge | Toggle | Acc 24hr | CR_1 Latch 1 | zOutGrp 4 |

Figure 3: Output Groups Event

- 5. Open the card database editor Click card, card editor, card admin, Open, and select which output group the card belongs to by editing the output group column.

| Status | Card | Name | First Name | Area Group | Output Group |
|---------|-------|-----------|------------|----------------|-----------------|
| Enabled | 13 | HAnnibal | Michael | zArea group 01 | Testing Out GRP |
| Enabled | 103 | zCard 002 | | zArea group 01 | zOutGrp 2 |
| Enabled | 1103 | zCard 003 | | zArea group 01 | zOutGrp 3 |
| Enabled | 11103 | zCard 004 | | zArea group 01 | zOutGrp 4 |
| Enabled | 5 | zCard 005 | | zArea group 01 | |
| Enabled | 6 | zCard 006 | | zArea group 01 | |
| Enabled | 7 | zCard 007 | | zArea group 01 | |
| Enabled | 8 | zCard 008 | | zArea group 01 | |
| Enabled | 9 | zCard 009 | | zArea group 01 | |
| Enabled | 10 | zCard 010 | | zArea group 01 | |
| Enabled | | zCard 011 | | zArea group 02 | |

Figure 4: Card Admin

6. Troubleshooting:

- a. Output groups stops working after a while:
 - i. On the HH Programmer check to see if the output groups are still enabled.

0 n/Output Group

- ii. In the software, card database, check to see if the card still has an output groups assigned to it.
 - iii. In the software, Output groups. Check to see if the output group events are still setup correctly (See above for the steps).
 - iv. If the settings are fine. Run a setup and reset to the controller, in the controller setup.
- b. Card not found, or incorrect card number in main activity when card is badged at reader:
 - i. Check the FW version of the controller,
 - 1. CR355 FW version 2.29 or greater (Check controller setup).
 - 2. CR390 FW version 0.81 or greater (Check controller setup).
 - ii. Check if the card has a card number in card admin.
- c. Output Group events are setup but do not get sent to the controller.
 - i. Ensure that the reader is set for Random Database(DB10)
 - ii. Ensure that the controller where the output group events are intended to be used is a CR390 controller with FW version 0.81 or above
 - iii. Check that output groups are enabled on the CR390
- d. Some of the outputs in the group do not work properly
 - i. Check the type in output setup. Ensure that the type is set for AUX and that the time group is correct. EG: level one out 24H or level 1 output never.
 - ii. Check the action is setup correctly. If it is set correctly run a setup to the controller
 - iii. Check the time group in output group events and ensure that it is the time group needed.