



SW3 Rd Enable How2

Revision 003

24 January 2023

Revision History

Version	Date	Person	Reason For Changes
001	2022-09-06	MTL	Initial
002	2022-09-06	MTL	Add User and Zone Time Groups
003	2023-01-23	MTL	Add setting for older SW3 versions (1.4.32)

CONTENTS

1	AIM	3
2	GENERAL	3
3	USERS ENABLE	3
4	USERS TIME GROUP	3
5	READER ENABLE / ISOLATE	3

1 AIM

The aim and goal of this .PDF document is to serve as additional help manual for the use of the Softcon Systems. The document details how to en-disable a reader (reader not active for any token).

As this document is general to all versions, certain options and setting refer to specific versions with color fonts as follows:

- Newer** – requires SW version 1.4.60 or later, also requires Universal Controller (CntrP) versions.
- Universal** – requires SW version 1.4.60 or later, also requires Universal Controller (CntrP) versions.
- Legacy** – SW version before 1.4.60

2 GENERAL

Readers (Tag, Card, Bio, etc.) are connected to CR355 / CR390 / CR391 Control Panels (CntrP). Most CntrPs have 2 identical reader ports with Wiegand / Data-clock interfaces. The CR391 CntrP can be expanded to **8 x Readers** (via Serial interfaces to other Expanders or serial readers).

3 USERS ENABLE

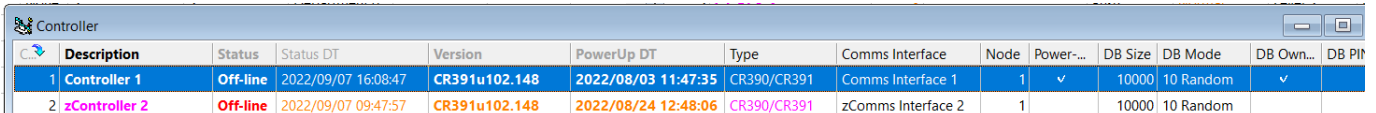
Each reader is set to grant access to an area zone. Every user (persons who request access at readers), is **Enabled** and has have access to area zone(s) set via **Area Zone Group** selection(s) is granted access if **Time Group** allows access at that time. If access is not allowed, the reader indicates denied (generally RED led) and Out Of Area if reported to the PC.

4 USERS TIME GROUP

Every user is allocated a **Time Group**, selecting when access is allowed (must be enabled for that Area Zone).

To have different Times for different Area Zones, additional settings are required (e.g. can go in during day, exit any time):

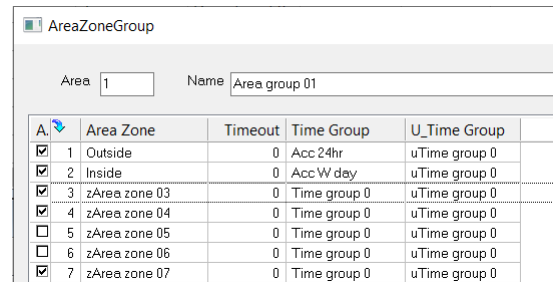
- Set **Controller** to have Tg per reader in Setup\setup Edit\Controller – option DB Own



Description	Status	Status DT	Version	PowerUp DT	Type	Comms Interface	Node	Power...	DB Size	DB Mode	DB Own...	DB PIN
1 Controller 1	Off-line	2022/09/07 16:08:47	CR391u102.148	2022/08/03 11:47:35	CR390/CR391	Comms Interface 1	1	▼	10000	10 Random	▼	
2 zController 2	Off-line	2022/09/07 09:47:57	CR391u102.148	2022/08/24 12:48:06	CR390/CR391	zComms Interface 2	1		10000	10 Random		

- For **Legacy**, this setting is in reader menu in Setup\setup Edit\Reader – Tg per Reader

- Set a Time Group for the Area Zone in Area Group allocated to the User:
If this setting is 0, the Tg allocated to the User is used.
e.g. to outside = 24 hrs, to Inside = Week day
to Zone 3, 4 and 7 = according to the Tg set for the user.



Area Zone	Timeout	Time Group	U_Time Group
1 Outside	0	Acc 24hr	uTime group 0
2 Inside	0	Acc W day	uTime group 0
3 zArea zone 03	0	Time group 0	uTime group 0
4 zArea zone 04	0	Time group 0	uTime group 0
5 zArea zone 05	0	Time group 0	uTime group 0
6 zArea zone 06	0	Time group 0	uTime group 0
7 zArea zone 07	0	Time group 0	uTime group 0

5 READER ENABLE / ISOLATE

ENABLE ON INPUT

An input in the CntrP can be set as Reader enable. Reader is disabled (for all tokens) if the input is low (contact to ground on the input). Typically connected to a vehicle detect device, with reader enabled if vehicle present at reader.

ISOLATED ON OUTPUT

Given the enable on input (described above), an auxiliary output (e.g. relay 4) can be set to switch ground with time group (Tg. on level 1), with link between this relay and the enable input.

To save on an output and input to do linking output to input, a virtual output can be set as output type Isolate. A virtual output is one that does not have a physical port.

For CR35x and CR390/1, Output ports 13 and 14 are reserved as virtual outputs.

Simply set output TimeGroup level 1 for an output type Isolate, port 13 / 14, with a time when the output is active (reader is isolated).

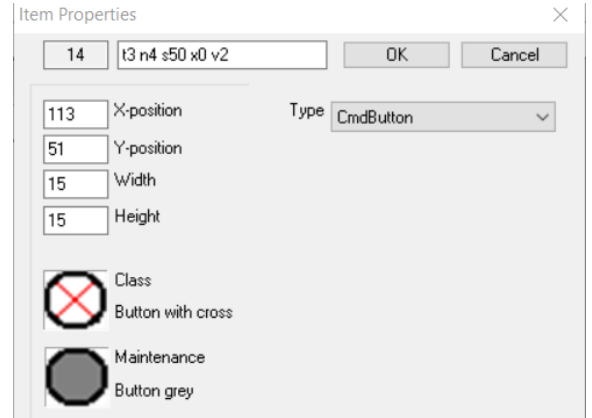
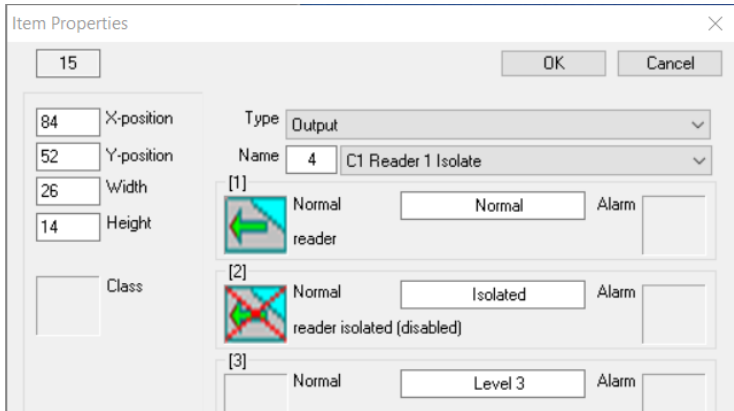
ISOLATE BY PC

Softcon SW (SoftWin3) can send an event to a CntrP to set the **operational status** of a readers to:

- Normal.
- Isolated.

These messages can be created by events, e.g. by:

- Clicking on Items (e.g. buttons) on Drawings (Maps).
The event generated simply set the Isolate output to level 1 (normal) or level 2 (Isolate) – shown is setup of a button to isolate
Below is setup of an item to show the output (hence the reader status).



- Timed / Event / Counter events can be set to do the same.