



SW3 Bootloader Help

Revision 457

21 February 2021



Revision History

Version	Date	Person	Reason For Changes
458	2021-02-01	MTL	New document
459	2023-03-30	MTL	Add FW versions

CONTENTS

1	GENERAL	3
2	FW VERSIONS	3
3	SETUP	3
	3.1 QUICK SETUP	3
	3.2 BOOTLOADER SETUP	3
	3.3 CONTROLLER SETUP	4
	3.4 COMMS INTERFACE SETUP	4
4	TOOLS	4
	4.1 BOOTLOADER MESSAGES	4
	4.2 SECURITY	4

1 GENERAL

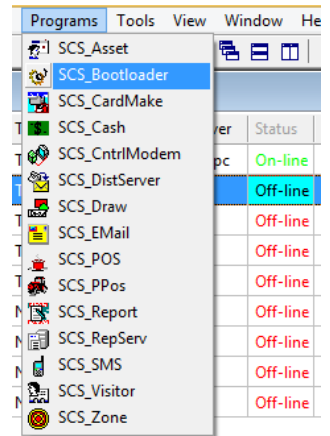
This application updates controllers (CntrP) connected to the Ethernet (TCP/IP) or LAN (RS-485) – connected to SW3.

Requirements:

- CR391 that has a firmware version SCS_CR391P_00K.01V or higher.
- TCP/IP or RS-485 connection to the CR-391.
- SW version Softwin3_1_04_15 or Higher.

SCS_Bootloader.exe is started directly or via SCS_Client-Programs.

The controller must be on-line with SCS_Client (will send a message to the controller to enter BootLoader mode).



[CR391_FWupdate.manual](#) gives all update options (includes ICD programmers).

2 FW VERSIONS

Note that updating FW using BootLoader requires that the BootLoader FW currently on the controller matches the BootLoader in the new FW.

BootLoader FW only changes when specific memory configurations change.

Last was changed:

Legacy FW version 012.050 (2022-01-26)

Universal FW version 102.144 (2022-01-26)

These versions or later can be updated to the latest version using BootLoader.

To update from Universal to Legacy, the existing version on the Controller must be:

Universal FW version 102.14B (2023-02-22)

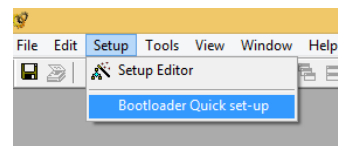
The latest FW versions of Legacy and Universal are available on www.softconserv.com/download

See SCS_sw3_BootLoader.help [SCS sw3 BootLoader.help](#)

3 SETUP

Two options are available for upgrade

- Quick setup** CntrPs once, same time.
- BootLoader** Multiple with schedule and retry.



3.1 QUICK SETUP

Firmware file to update the CntrP with is selected
HEX-File: Browse to firmware by clicking on the browse button.

Time and date scheduled

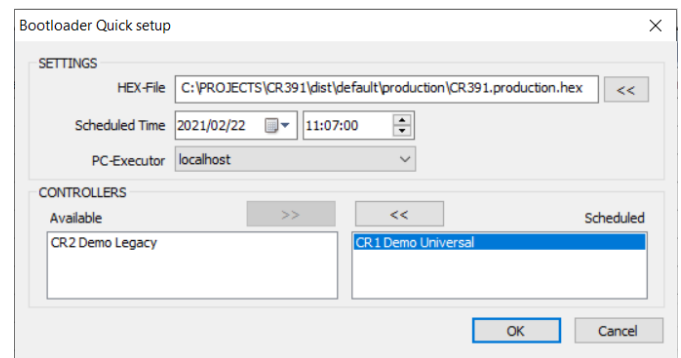
Date and time when the schedule needs to run.

CntrPs to be updated

Select available and move to the scheduled box.

PC- Executor

Select the computer that will execute the update.



OK will set the schedule.

3.2 BOOTLOADER SETUP

Controller	PC Executor	UDP ...	Tries	File	Operation Date	Status	Last Done	BL Version
CR1 Demo Universal	localhost	6234	3	C:\PROJECTS\CR391\dist\default\production\...	2021/02/22 12:30:00	No Response fr...	2021/02/22 12:30:22	
CR2 Demo Legacy		6234	3					

This list shows all CntrP in the system.

Scheduled
Success

As set PC that must do the update (if unsuccessful) and the **Operation Date**

Status automatically changes (errors in red)

Version request
Flash erased
Programming
Programming completed
Verifying
Verification successful
Run application
In queue
Node will enter Bootload mode in 5 sec
Device connected
Command issued to run node application
Node marked for upgrade
Started

(**Executer**), the number of **Retries** (when to do).

Stopped by user
Incorrect Bootloader set-up
Boot Mode message failed
Incorrect Bootloader file
Bootloader file does not exist
Failed to set the receive timeout
Receive Socket Error
No Response from device
Verification failed
Connection error

3.3 CONTROLLER SETUP

Shows the Controller available (set via SCS_Client)

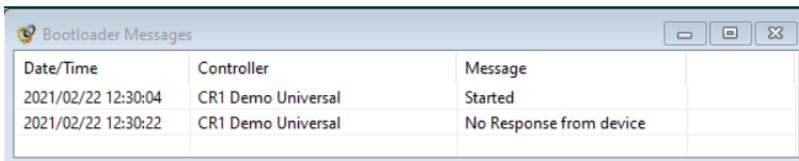
3.4 COMMS INTERFACE SETUP

Shows the Comms Interface (set via SCS_Client)

4 TOOLS

4.1 BOOTLOADER MESSAGES

This the BootLoader activity menu – listing events as they occur.



Date/Time	Controller	Message
2021/02/22 12:30:04	CR1 Demo Universal	Started
2021/02/22 12:30:22	CR1 Demo Universal	No Response from device

4.2 SECURITY

Log On/Off, Changing **Password** and **Menu Access** is the same as for SCS_Client

